



95RU3 Series
3.5 Inch External HDD Enclosure

User Manual

Catalog

What is in the box	2
Product Introduction	2
Specifications	3
Product features	3
Product Illustration	4
Set up RAID	5
Set through ORICO HW RAID Manager Software	6
Attention	13
Remove the Device	13
Hard-drive Format Partition Operation	13
Failure Solutions	17
Notice	17
Declaration	18
FCC	18

Thanks for choosing ORICO!

Please read this user's manual carefully before using it!

What is in the box

1. The Product.....	1PCS
2. Data Cable.....	1PCS
3. Power Cord/Power Adapter.....	1PCS
4. Key.....	2PCS
5. User Manual.....	1PCS
6. Thanks Card.....	1PCS

The product, accessories and package may optimized for better application performance. We sincerely sorry that they may not exactly match with what showing in manual and appreciate your please adhere to the original products and contact ORICO customer care team if any further concern. Thank you very much.

Product Introduction

ORICO 95 series RU3 is a multi-bay 3.5 inch SATA hard drive enclosure. Aluminum alloy material coupled with the quiet fan, making it a good heat-dissipation performance. Meanwhile, it is designed with over current, short-circuit protections for the disk and data. This series integrates RAID 0, RAID 1, RAID 3, RAID 5, RAID 10, Big and Normal modes. RAID 0 mode provides you with a fast file transfer experience, and RAID 1 mode provides you with safe file backup, RAID 3 and RAID 5 are the most ideal choice for creating secure backups, while RAID 10 is a combination of RAID 1 and RAID 0; Big mode can help you to combine multiple hard drives for easier data management. Normal mode is that all hard drives do not form any RAID or group and can run independently. In terms of transmission, the theoretical transmission speed of USB3.0 high-speed interface can reach 5Gbps.

Specifications

Model	95RU3 Series
Material	Aluminum Alloy
Surface	Frosted
Input	SATA3.0
Output	USB3.0 Type-B
Transmission Rate	5Gbps
Data Cable	USB Type-A/M To USB Type-B/M
Power Supply	9558RU3 AC100-240V Power Cord 9548RU3 AC100-240V Power Cord 9528RU3 12V ---3A Power Adapter
Dimensions	9558RU3 264(L) × 146(W) × 199.5(H)mm 9548RU3 264(L) × 146(W) × 164.5(H)mm 9528RU3 235(L) × 145(W) × 93.5(H)mm

Product features

1. Tool-free installation, hot-swappable, plug and play.
2. Adopts SATA3.0 6Gbps bridging solution.
3. The USB transmission interface complies with the USB3.0 specification and supports up to 5Gbps transmission rate.
4. LED indicator, monitoring the working status of the hard disk at any time.
5. Built-in lock hole, fenestration design, protects your data.
6. The 5-bay and 4-bay versions are built-in 150W power supply.
7. The 5-bay and 4-bay versions support 7 RAID modes, RAID 0, RAID 1, RAID3, RAID 5, RAID 10, Big and Normal modes.
8. The dual-bay enclosure supports 4 modes, RAID 0, RAID 1, PM, SPAN.
9. Support intelligent sleep technology, energy saving and environmental protection, and improve the service life of disks.
10. Hot-swappable, plug and play.

Product Illustration

9528RU3

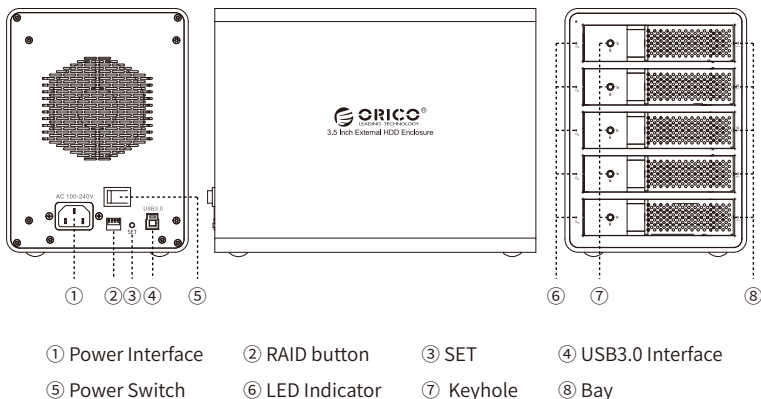


- | | | | |
|-------------------|--------------------|---------------|-------|
| ① Power Interface | ② USB3.0 Interface | ③ RAID button | ④ SET |
| ⑤ Power Switch | ⑥ LED Indicator | ⑦ Keyhole | ⑧ Bay |

9548RU3



- | | | | |
|-------------------|-----------------|-----------|--------------------|
| ① Power Interface | ② RAID button | ③ SET | ④ USB3.0 Interface |
| ⑤ Power Switch | ⑥ LED Indicator | ⑦ Keyhole | ⑧ Bay |



- | | | | |
|-------------------|-----------------|-----------|--------------------|
| ① Power Interface | ② RAID button | ③ SET | ④ USB3.0 Interface |
| ⑤ Power Switch | ⑥ LED Indicator | ⑦ Keyhole | ⑧ Bay |

Set up RAID

• Note

1. Introduction of RAID Mode

This product supports RAID 0, RAID 1, RAID 3, RAID 5, RAID 10, Big and Normal.

RAID 0: Merge all HDDs' capacity in the HDD enclosure and upgrade its performance (reading & writing speed).

RAID 1: Two HDDs in the HDD enclosure can backup each other, cannot upgrade its performance (reading & writing speed). And it can support self restoration function (RAID 0 and SPAN modes cannot support this function), which makes files restored when mistakes and faults occur.

PS: RAID 1 can only support 2 HDDs.

RAID 3 and RAID 5 require 3 or more hard drives, one of which will be used for backup data, and the remaining hard drives will be combined for your use.

RAID 3 or RAID 5 not only ensures data security, but also provides certain performance improvements. It is the most economical RAID solution and is suitable for most users.

RAID 10=RAID 0 + RAID 1

Big= Merge all HDDs' capacity in the HDD enclosure to make it easy to manage but cannot upgrade its performance.

Normal=Normal state, all HDDs in the HDD enclosure work independently without forming any RAID modes.

2. RAID mode needs two or more HDDs.
3. Please backup all files before setting or changing RAID mode, because all files stored in HDDs in the HDD enclosure will be cleared while operating this.
4. Please don't change HDD bays' order under RAID mode to prevent its unstable running.
5. Please don't remove the HDD in the HDD enclosure under RAID mode. You should delete the hardware and exit media on the computer before removing the HDD.
6. All HDDs work independently and are displayed on computer without forming any RAID modes under Normal mode. Attention: Removing or inserting another HDD under this mode will restart the HDD enclosure and make other HDDs disconnected temporarily. So removing or adding HDD after powered off is recommended.
7. Please confirm Normal mode before setting or changing RAID mode. Or you could set PM mode in advance before setting or changing RAID mode.
8. Do not change the order of the disks under RAID mode to avoid data loss.
9. HDD is precision equipment and RAID is precision system. Please backup your files all the time and operate it carefully to avoid any data mistakes or data loss resulted from improper operations.

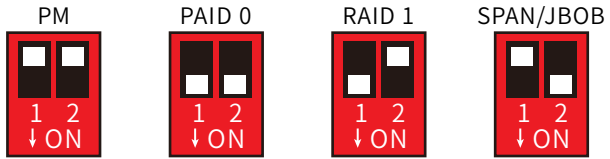
• **Set RAID through RAID Control Switch**

1. Turn off the HDD enclosure and HDDs, switch the RAID control switch to "PM" position, press "Set" button and turn on the power switch of the HDD enclosure. PM mode will be set successfully in about 10s. It will buzz when the setting is completed.
2. Turn off the HDD enclosure and HDDs again, switch the RAID control switch to your required RAID mode position, press "Set" button and turn on the power switch of HDD enclosure. Required RAID mode will be set in about 10s. It will buzz when the setting is completed.
3. HDDs or HDD group that has been set RAID mode will be displayed on computer later and it can be started to use after initiating and partitioned formatting. Please try to restart the HDD enclosure and computer or reset RAID mode if HDDs or HDD group aren't displayed on computer.

Press and hold the "SET" button, then boot the enclosure, and release the SET button after about 10 seconds, that is, the RAID mode is successfully set.

Note: After the RAID is successfully formed, a new hard disk will be generated. It must be initialized and formatted before it can be used normally.

9528RU3 RAID modes



(PS: White button is a function button)

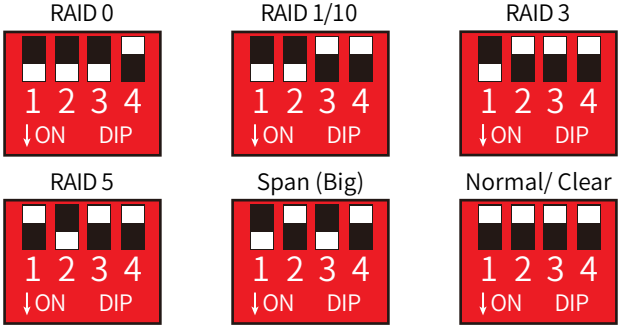
PM(upper—upper)

RAID 0(lower—lower)

RAID 1(lower—upper)

SPAN(upper—lower)

9548RU3、9558RU3 RAID modes



(PS: White button is a function button)

RAID 0(lower-lower-lower-upper)

RAID 1/10(lower-lower-upper-upper)

RAID 3(lower-upper-upper-upper)

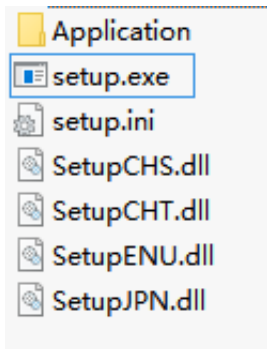
RAID 5(upper-lower-upper-upper)

Span(Big)(lower-upper-lower-upper)

Normal(upper-upper-upper-upper)

Set through ORICO HW RAID Manager Software

1. Download and install ORICO HW RAID Manager from ORICO official site. Please unzip it before operating if the software is RAR form.

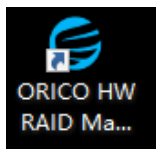


2. Turn off the HDD enclosure, run Setup.exe of installation program and start installing as the following pictures show. You may need to restart your PC after finishing the installation.





3. The shortcut of ORICO HW RAID Manager software will appear on PC desktop after finishing the installation. Please turn on the power of the HDD enclosure and HDD, double click to run the software to set or manage RAID.



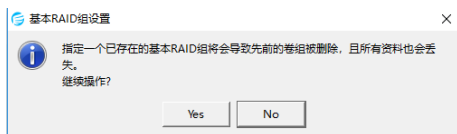
4. Click the icon in the left box at the following picture to open the basic RAID setting interface. Choose the required RAID mode in the RAID mode list and then click "Apply" to set the RAID mode.



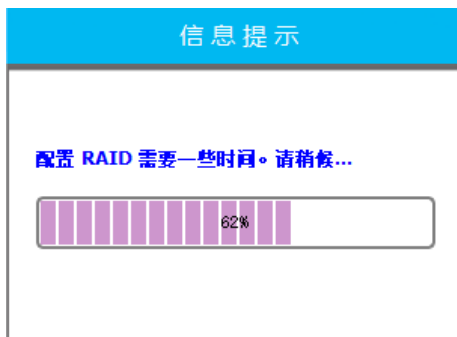
Note:

Please confirm the HDD enclosure and HDDs are under Normal mode before setting your required RAID mode. Or you could set Normal mode in advance before setting or changing to the required RAID mode.

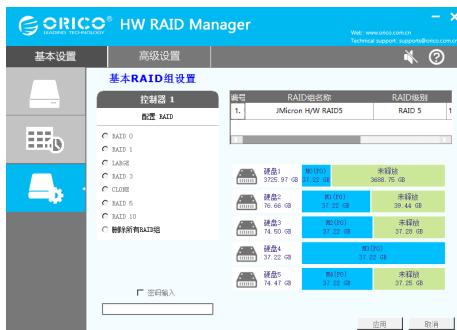
5. Pop up the following interface and click "Yes" to set the chosen RAID, click "No" to cancel the setting.



6. After click "Yes", setting will be started automatically and the progress bar will show you setting progress. Pop up the prompt interface to let you know the setting is finished.



7. HDDs or HDD group that has been set RAID mode will be displayed on computer later and it can be started to use after initiating and partitioned formatting. (Please try to restart the HDD enclosure and computer or reset RAID mode if the formatting of HDDs or HDD group is fail.)



8. Click the advanced options as the following picture shows to open "E-mail Informing Set". We are sorry that it cannot support this function at present. We will inform you as soon as possible when it can be normally used.



Attention

1. The hard drive is precision device, please refer to operation manual in advance and correctly operate it.
2. Please do not disassemble or Repair this product by yourself.
3. Please do not puncture or crush this product and keep it away from high and low temperature, damp and dusty conditions.
4. You will need to initialize the hard drive to work properly if you are using a new hard drive.

Remove the Device

Attention: Do not forcibly remove the hard drive enclosure and disks to avoid data damage or loss.

1.Remove devices from Windows

To stop using the device, click the "safely remove hardware and media" button in the lower right corner of the taskbar, and then click the device to be removed. When the system prompts "safely remove hardware", that means the device has been successfully removed from the system and it can be unplug from the computer.

2.Remove devices from Mac OS

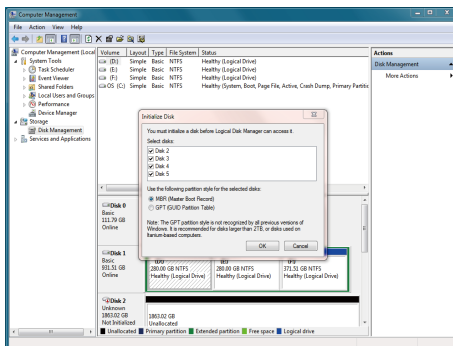
To stop using the device, select the device, and move it to the trash bin.

Hard-drive Format Partition Operation

You need to initialize and format the partition first, otherwise it won't work properly. If it is a brand-new hard drive, please initialize and format the partition according to the following steps:

- 1.Please ensure the ORICO enclosure is installed properly, and connected to the computer.

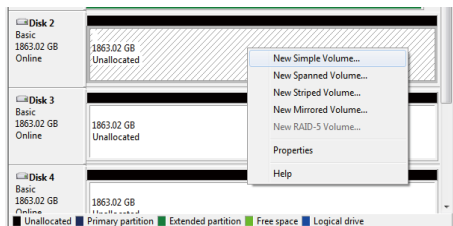
2. Right click “My Computer” , then select “Computer Management” , tap or click “Disk Management” on the left side of the window when “Computer Management” opens, then select “MBR” or “GPT” partition form and click “OK”



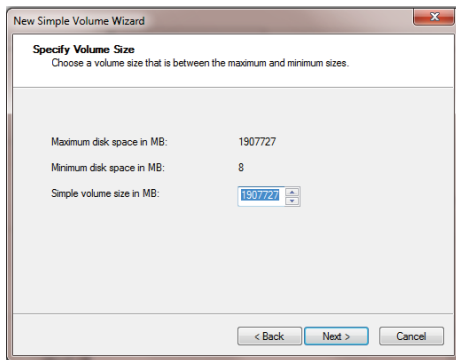
Note:

- If the disk capacity is less than 2TB, please use MBR partition form to initialize the hard disk.
- If the disk capacity is greater than 2TB, the disk must be initialized by using of GPT partition form, otherwise only 2TB capacity will be available and the excess capacity will not able to use.

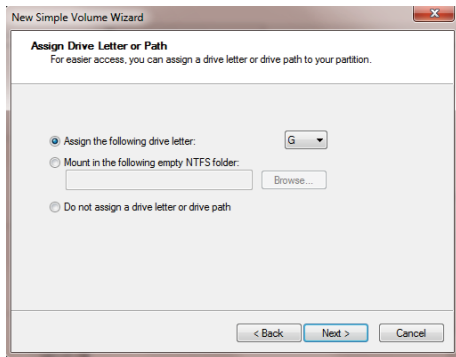
(3) Right click the "unallocated" disk space, select "new simple volume" to start formatting the hard drive partition



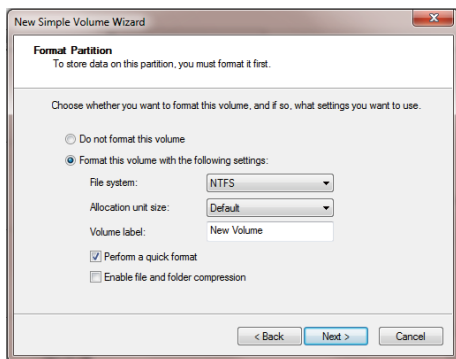
- (4) When setting the capacity of disk partition, can customize the partition capacity, or set the default maximum simple volume size, and there will be only one disk partition.



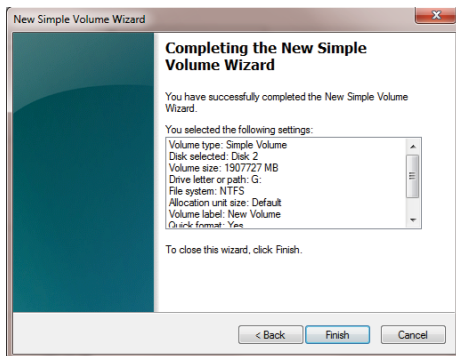
- (5) Allocating the drive letter and path, (e.g. Explorer, C, D, E, F, G drive) drive letter.



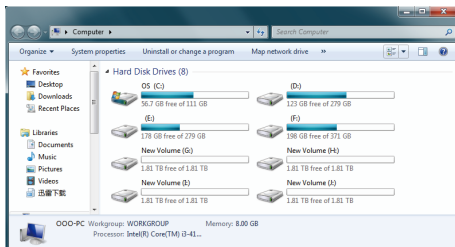
- (6) Format partition, able to set file system format (NTFS, FAT32 or exFAT), assign unit size (default set), volume label name, recommend "perform quick format", and click "next" when configuration is completed



- (7) Click "finish" to perform the final step of formatting partition.



- (8) It will take 5-30 seconds, and the new partition drive letter will be displayed in the explorer after formatting.



Failure Solutions

If the product cannot be recognized in the computer, please try to solve the issue according to the following methods:

- Under XP system, due to the system limit of XP itself, the hard drive with capacity of more than 2TB cannot be normally used. You can update the system to WIN7.
- If the hard drive cannot be displayed in the WIN7 system, your can check whether the hard drive is new or not. The new hard drive needs to be initialized in the computer management before use.

Notice

1. Please do not hit, throw, or puncture the product, and avoid dropping, squeezing, or bending.
2. Please do not use or store this product in a humid environment and avoid being wetted or rinsed with liquids.
3. Please do not use the product in a hot, high-dust environment and keep it away from fire.
4. Please do not expose this product to the sun.
5. Please do not place this product in a corrosive environment. Do not use other chemical solutions to clean the product.

6. Please keep the product and accessories away from children. Do not allow children to use the product without supervision.
7. Please do not disassemble and repair the product or accessories without the authorization of ORICO.
8. If you have any questions during the use of this product, please feel free to contact your dealer or ORICO Customer Service Center.

Declaration

ORICO Technologies Co., Ltd., all rights reserved.

Thank you so much for purchase ORICO product. Please refer to this manual when using orico product or experienced issues. Additionally, please kindly contact ORICO customer care team if any concern.

ORICO® is registered trademark of ORICO TechnologiesCo., Ltd.. Any other product, trademark, service or company mentioned herein is trademark or registered trademark of the respective owners.

This manual is for reference only and it's not a guarantee.

ORICO Technologies Co., Ltd. reserve all rights of maintenance to this manual and shall not liable for any lost or damage resulting from this manual. Please kindly contact orico customer care team when any concern.

ORICO Technologies Co., Ltd shall not liable for compensation and maintenance of the following conditions.

1. Any special, incidental, indirect and secondary lost or damage.
2. Profit and revenue lost or damage.
3. Files, data, drive and device lost or damage.

Note: Compensation for lost or damage resulting from This manual or orico product shall not exceed the payment of your purchase to this product.

FCC

This device complies with part 15 of the FCC Rules.

Operation is subject to the following two conditions:(1)This device may not cause harmful interference, and (2) this device must accept any interference received, including interference that may cause undesired operation.



www.orico.cc

ORICO Technologies Co.,Ltd.

Hotline: 400-6696298

Tel: 86-755-25196059

Website: www.orico.cc

E-mail: supports@orico.com.cn

Company Add: 19/F, Block 14A, Zhonghaixin Science &Technology Park, Longgang District, Shenzhen, China

Factory Add: Room 201, Building 11, No. 24, Tangjiao Road, Changping Town, Dongguan City, Guangdong, China
