



3529RUS3

2盘位3.5寸USB3.0硬盘柜

Dual Bay 3.5-inch USB3.0 RAID Enclosure



官方网站



Website

发行版本：3529RUS3-MUG-R2

执行标准：GB 17625.1-2012 GB4943.1-2011  
GB 9254-2008

制造商：深圳市元创时代科技有限公司  
Manufactured by ORICO Technologies Co., Ltd

电话 /Tel: 86-755-25196059

邮箱 /E-mail: supports@orico.com.cn

官方网站: <http://www.orico.com.cn>

Official Website: <http://www.orico.cc>

公司地址：深圳市龙岗区中海信科技城 14A 栋 9 楼  
Company Add: F9, Building 14A, Zhonghaixin Science  
& Technology City, Bulan Rd, Shenzhen, China

工厂地址：东莞市常平镇塘角路 24 号元创动力 (ORICO)  
互联网产业园

Factory Add: ORICO Internet Oriented Industrial Park,  
No.24 Tangjiao Rd, Changping County, Dongguan



## 目录 / Contents

前言 .....	2
注意事项 .....	2
产品和配件清单 .....	3
产品介绍 .....	4
安装指南 .....	8
组建RAID .....	9
分区与格式化 .....	10
版权说明 .....	11
Declaration .....	12
Note .....	12
What's in the Box .....	12
About this Product.....	12
Build RAID .....	13
Initialize and Format New Drives under Microsoft Windows .....	14
Trouble Shooting .....	21

## 前 言

感谢您购买ORICO产品，为了您能够更好的使用本产品的所有功能，请您在使用前仔细阅读本手册内所提及的在产品使用过程中应注意的事项以及详细操作说明。

未经深圳市元创时代科技有限公司明确书面许可，任何单位或个人不得擅自仿制、复制、誊抄或转译本书部分或全部内容。不得以任何形式或任何方式（电子、机械、影印或其他可能的方式）进行商品传播或用于任何商业、赢利目的。

ORICO®为深圳市元创时代科技有限公司注册商标。本文档提及的其他所有商标或注册商标，均属其合法注册之公司所有。

本手册所提到的产品规格和资讯仅供参考，如有内容更新，恕不另行通知。除非有特殊约定，本手册仅作为使用指导，本手册中的所有陈述、信息等均不构成任何形式的担保。

### 注意事项

1. 深圳市元创时代科技有限公司只对产品本身存在的问题负有保修和维修责任，不对误操作等其他意外情况造成的数据资料损坏或丢失负有责任，也不对ORICO产品造成其它间接损失负责。
2. 请勿自行拆解、维修ORICO产品。
3. 请勿摔打、碰撞本产品。
4. 请勿在高温、低温、潮湿、多尘的环境中使用本产品。
5. 请勿将本产品置于水中、日光中。
6. 请勿将本产品置于有腐蚀性物品的环境，严禁使用其他化学溶液清洗本产品。
7. 未经使用过的硬盘需要初始化后可以正常使用，详情请参考本手册“分区与格式化”操作说明。

8. 本产品使用过程中如有任何问题，可随时与您购买产品的经销商或ORICO客户服务中心联系。
9. 以下情况将无法享受保修服务：
- A. 产品已经超过质保期。
  - B. 自行拆解、改动或维修过的产品，以及碰撞、进液、错误操作等与本手册的操作说明不符的操作行为。
  - C. 人为损坏、非产品自身问题。
  - D. 产品或包装盒条码与实物不符或被涂改、撕毁。
  - E. 水灾、火灾、雷击、地震等不可抗力造成的损坏。
  - F. 使用非原装配件造成的损坏。
  - G. 无有效的购买证明。

## 产品和配件清单

请依照配件清单检查包装内的内容是否齐全。如果有任何问题可随时联系您的原购买经销商以获得支援。

ORICO 3529RUS3 .....	1PCS
USB3.0 数据线 .....	1PCS
e-SATA 数据线 .....	1PCS
电源线 .....	1PCS
电源适配器 .....	1PCS
用户手册 .....	1PCS
感谢卡 .....	1PCS

### 温馨提示:

因产品生产批次不同，产品包装、外观或者配件可能会有所更改，与此说明书提供的图片、外观、说明不一致，请您以收到的产品实物为准，若由此给您带来不便请多多谅解，谢谢！

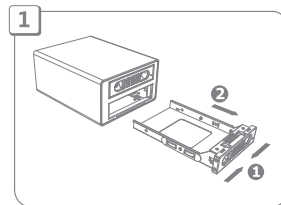
## 产品介绍

ORICO 3529RUS3 免工具2盘位3.5寸SATA磁盘阵列硬盘盒采用铝合金打造，造型时尚，散热优异，支持同时读取两个3.5寸SATA串口硬盘，便捷的免工具托盘设计可帮您迅速部署或移除硬盘。

ORICO 3529RUS3 同时集成 RAID 0，RAID1，Big和Normal四种模式，RAID 0模式可为您提供极速的文件传输体验，RAID 1模式则可为您提供安全的文件备份，Big模式可帮您将两块硬盘合二为一、更便于资料管理，Normal模式则为常规模式，两块硬盘未组成任何RAID或组，可分别独立运行。

在传输方面，ORICO 3529RUS3 提供USB3.0和eSATA两种超高速输出接口，USB3.0超高速接口理论传输速度可达5Gbps，是USB2.0的10倍，可帮您更快速的完成文件或资料传输。

## 安装指南

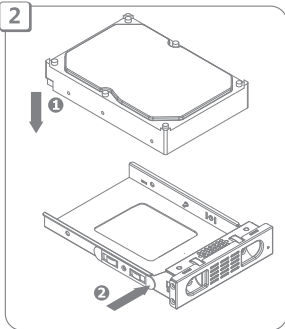


1. 请按住托盘中间的按键沿箭头方向，取出硬盘的托盘。

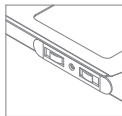


托盘按键锁住状态      托盘按键打开状态

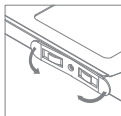
2



2. 按照箭头方向放入硬盘到托盘中, 然后压左右侧的锁片锁住硬盘。

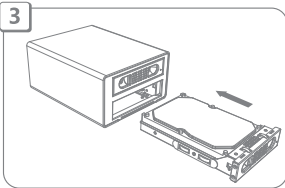


硬碟锁片锁住状态



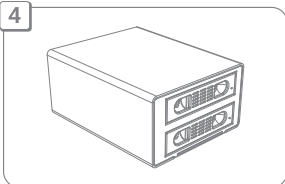
硬碟锁片打开状态

3



3. 沿箭头方向, 将装好硬盘的托盘插入硬盘盒内。

4



4. 装好硬盘的硬盘柜。

## 组建RAID

### 注意事项

#### 1. RAID模式详解。

ORICO 3529RUS3支持 RAID 0, RAID 1, Big 和 Normal 四种模式。  
RAID 0=将硬盘盒内的所有硬盘容量合并, 并提升性能(读写速度)。  
RAID 1=硬盘盒内的两个硬盘互为备份, 不提升性能(读写速度), 但是安全性优异, 支持自我修复(RAID 0和Big不支持此功能), 可以在其中一个硬盘发生错误或故障时, 确保资料仍可被修复、不会造成资料丢失。  
注: RAID 1只支持两个硬盘。

Big=将硬盘盒内的所有硬盘容量合并, 以方便管理, 但是并不提升性能。  
Normal=常规正常状态, 硬盘盒内的所有硬盘未组成任何RAID模式, 独立运行。

#### 2. RAID模式需要两个或更多硬盘。

3. 设置或更改RAID模式时会本产品内所有硬盘的文件全部清空, 因此, 设置或更改RAID前, 请先备份所有资料。

4. 请勿更改RAID状态下的硬盘盘位顺序, 以免影响RAID模式的稳定运行。

5. RAID模式运行时, 请勿弹出硬盘盒内的硬盘。如需弹出硬盘, 请先从计算机中安全删除硬件并弹出媒体, 然后关闭硬盘盒的电源, 再弹出硬盘。

6. Normal模式下的所有硬盘未组成任何RAID模式, 硬盘盒内的所有硬盘均为独立的磁盘工作以及显示在计算机中。需要注意的是: 此模式下如果弹出其中任何一个硬盘或是插入一个硬盘, 将会使硬盘盒重启、其他所有硬盘的连接也暂时中断。建议在硬盘盒断电时弹出或者增加硬盘。

7. 设置或更改RAID时, 请确保硬盘盒和硬盘处于Normal模式下, 或者先设置硬盘盒到Normal模式之后方可设置或更改到您需要的RAID模式。

8. 硬盘为精密设备, RAID也是精密的系统, 请时刻备份您的重要资料, 并谨慎操作, 以免任何错误或不当的操作造成的数据错误或丢失。

### 关于RAID

磁盘阵列是由很多磁盘组合成一个容量巨大的磁盘组, 利用个别磁盘提供



数据所产生加成效果提升整个磁盘系统效能。利用这项技术,将数据切割成许多区段,分别存放在各个硬盘上。

磁盘阵列还能利用同位检查 ( Parity Check ) 的观念,在数组中任意一个硬盘故障时,仍可读出数据,在数据重构时,将数据经计算后重新置入新硬盘中。

## RAID级别

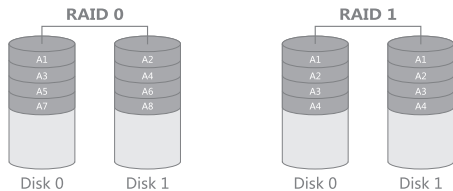
RAID技术主要包含RAID 0 ~ RAID 50等数个规范,它们的侧重点各不相同。

### RAID 0

RAID 0连续以位或字节为单位分割数据,并行读/写于多个磁盘上,因此具有很高的数据传输率,但它没有数据冗余,因此并不能算是真正的RAID结构。RAID 0只是单纯地提高性能,并没有为数据的可靠性提供保证,而且其中的一个磁盘失效将影响到所有数据。因此,RAID 0不能应用于数据安全要求高的场合。

### RAID 1

它是通过磁盘数据镜像实现数据冗余,在成对的独立磁盘上产生互为备份的数据。当原始数据繁忙时,可直接从镜像拷贝中读取数据,因此RAID 1可以提高读取性能。RAID 1是磁盘阵列中单位成本最高的,但提供了很高的数据安全性和可用性。当一个磁盘失效时,系统可以自动切换到镜像磁盘上读写,而不需要重组失效的数据。



## 如何组建RAID

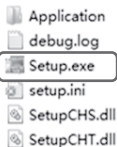
RAID模式可以通过产品背部接口的RAID控制开关设置,也可以通过ORICO HW RAID Manager管理软件在计算机上直接进行设置。无论使用那种方法,都可以帮助您快速简单的完成设置。再次温馨提醒您,设置或更改RAID模式时会使硬盘盒内所有硬盘的文件全部丢失,因此,设置或更改RAID前,请先备份好硬盘内的所有资料。

### 通过RAID控制开关设置RAID

1. 关闭硬盘盒和硬盘,切换产品背部接口的RAID控制开关到“Normal”位置,然后按住“Set”按钮并打开硬盘盒的电源开关。大约10秒钟之后硬盘盒即会成功切换至Normal模式,设置完成后硬盘盒蜂鸣器会响一声。
2. 再次关闭硬盘盒和硬盘,切换产品背部接口的RAID控制开关到需要设置的RAID模式位置,然后然后按住“Set”按钮并打开硬盘盒的电源开关。大约10秒钟之后硬盘盒即会成功切换至需要设置的RAID模式,设置完成后硬盘盒蜂鸣器会响一声。
3. 已经完成RAID设置的硬盘或硬盘组稍后即会显示到计算机中,在初始化和分区并格式化之后,即可开始使用。如果硬盘或硬盘组未显示在计算机中,请尝试重启硬盘盒以及计算机,或者尝试重新设置RAID模式。

### 通过ORICO HW RAID Manager管理软件设置

1. 从驱动光盘或ORICO官方网站下载,并运行ORICO HW RAID Manager安装程序,如果管理软件是压缩包,需要先解压缩之后再运行。



2. 关闭硬盘盒，运行ORICO HW RAID Manager安装程序中的Setup.exe并依照下图指引开始安装。安装完成之后，可能需要重启您的计算机。



3. ORICO HW RAID Manager管理软件的快捷方式将会安装在安装完成之后出现在桌面上，请开启硬盘盒以及硬盘的电源，并双击即可运行管理软件即可开始设置或管理RAID。



4. 点击下图左侧框中的图标即可打开基础RAID设置界面。界面中间的列表当前可设置的RAID模式，点击需要设置的RAID模式，然后点击应用即可设置到您需要设置的RAID模式。



注意:

- 4.1 开始设置您需要的RAID模式之前，请确保硬盘盒和硬盘处于Normal模式下，或者先设置硬盘盒到Normal模式之后方可设置或更改到您需要的RAID模式。
- 4.2 下图框内的选项可为您的RAID设置密码，选择您需要设置的RAID模式，然后勾选复选框，并输入密码，最后完成RAID的设置，即可在设置RAID的同时，为您的RAID设置密码、加密保护您的RAID。



# 分区与格式化

## 以下以Win7系统自带分区和格式化

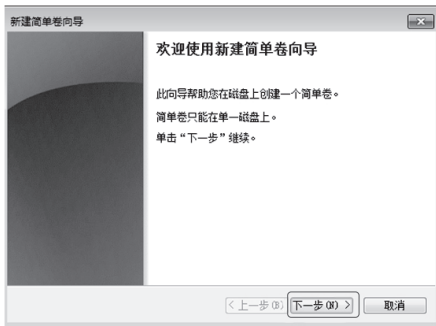
1. 右键单击桌面计算机，选择“管理”，进入计算机管理后选择“磁盘管理”。



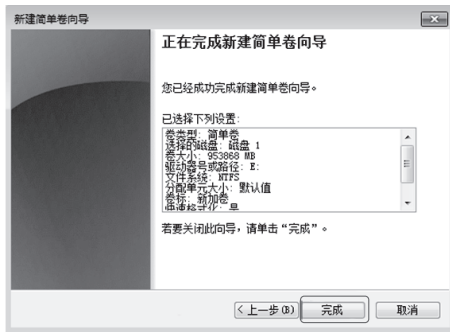
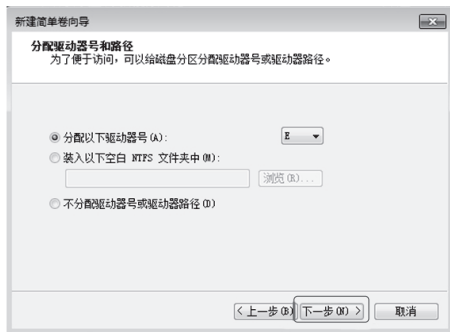
2. 在磁盘名称区域右击，选择“初始化磁盘”，然后在右边磁盘区域右击，选择“新建简单卷”。



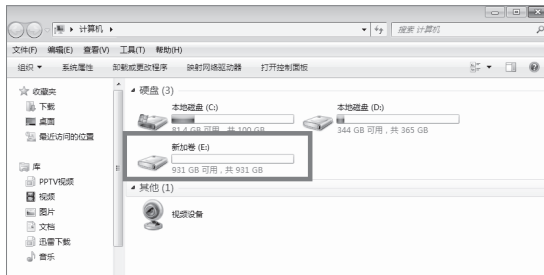
3. 在新建简单卷向导点击下一步，此时出现磁盘分区大小，根据您的需求，您可以选择将磁盘分为一个区或者多个区，简单卷大小等于当前分区的容量，1G=1024MB，若只需一个分区，数值调到最大即可（默认数值是最大），然后点击“下一步”。



4. 后面不需要更改，直接点击“下一步”，然后点击“完成”。



5. 此时磁盘就出现在您的电脑中，正常使用即可（若需多个区，重复以上步骤即可）。



## 版权说明

感谢您购买并使用 ORICO 的产品，请在使用该产品之前认真阅读本说明书，以确保正确的操作方法，强烈建议您开始使用该产品前，为了确保您的资料数据安全，我们强烈建议您做数据备份，ORICO 作为设备产品制造商对于任何因素造成资料及数据丢失不承担任何直接或间接责任，制造商并不承担任何赔偿和数据恢复的义务。

同时，深圳市元创时代科技有限公司不对用户及经销商作特殊承诺，不对意外数据丢失、直接或间接损失负责！如您开始使用该产品，即表示您理解并接受！

**版权说明：ORICO 相关产品以及资料均属于深圳市元创时代科技有限公司所有，拥有其相关制作权及版权，不得翻印。**

本用户手册包括但不限于其所包含的所有信息受到著作权保护，未经元创时代科技有限公司许可，不得任意地仿制、拷贝、摘抄、转译或为其他使用或处理。

本用户手册没有任何形式的担保、立场表明或其它暗示。若有任何因本用户手册或其所提到产品的所有信息，所引起直接或间接的数据流失、利益损失或事业终止，元创时代科技及其所属员工恕不为其承担任何责任。除此之外，本用户手册所提到的产品规格及信息仅供参考，内容亦会随时更新，恕不另行通知，元创时代科技不负责本用户手册的任何错误或疏忽。

本用户手册中所提及的产品名称只能做为识别之用，而前述名称可能是属于其他公司的注册商标或是制作权。当下列两种情况发生时，本产品将不再受到元创时代科技之保修及服务：

- (1) 该产品曾经非元创时代科技授权之维修、规格更改、零件替换；
- (2) 产品序列号模糊不清或丧失。

产品规格或驱动程序改变，用户手册都会随之更新。更新的详细说明请访问元创时代官网 <http://www.orico.com.cn>

## Declaration

Thank you so much for Purchase ORICO Product. Please refer to This Manual when using ORICO Product or Experienced Issues. Additionally, Please kindly Contact ORICO Customer Care Team if any Concern.

All Rights of This Product, Manual and Trademark are Reserved by ORICO Technologies Co., Ltd, Please DO NOT Copy or Re-Publish without the Authorization of ORICO Technologies Co., Ltd.

The Specification, Introduction of this Manual is for Reference ONLY. Please kindly Contact ORICO Customer Care Team is any Further Concern.

## Note

1. Please Accroding to This Manual when using this Product.
2. Illustrations, Pictures etc in this Manual is for Reference ONLY. Please Adhere to the Original Products.
3. Please Operate with CAUTIONS and Contact ORICO Customer Care Team for Support if any Help Needed. Any Improper Operation may Cause Failure, Lost or Damage to your Computer, Drives, Files etc. ORICO Technologies Co., Ltd will not Liable for Compensation or Maintenance of Drives, Files and Devices which is not Manufactured by ORICO.
4. Please DO NOT disassemble This Product. ORICOTechnologies Co., Ltd will not Liable for Compensation or Maintenance about Improper Operation not in Accordance with Manual and Unauthorized Disassembly.
5. Please DO NOT Cut, Puncture or Crush This Product.
6. Please Keep This Product from Fire, HEAT, Water, Damp, Oil and

Corrosive.

7. Warranty will be invalid under following situation.
  - A. Out of Warranty Period.
  - B. Unauthorized Disassembly.
  - C. Improper Operation not in Accordance with Manual.
  - D. Barcode or other Identity of Product missing or altered.
  - E. Natural Disaster such as Fire, Earthquake etc.
  - F. Failure Cased by Accessories which is not Manufactured by ORICO.
  - G. No Proof of Purchase.

## What is in the box

Please make sure you get a complete package lists as listed below, if not, contact a retailer or ORICO customer service for further help.

ORICO 3529RUS3.....	1PCS
USB3.0 Cable.....	1PCS
eSATA Cable.....	1PCS
Power Cord.....	1PCS
Power Adapter .....	1PCS
User Manual.....	1PCS
Service Card.....	1PCS

## Warm Prompt

The Product, Accessories and Package may Optimized for Better Application or Performance. We Sincerely sorry that they may not Exactly Match with what showing in Manual and Appreciate your Understanding. Please Adhere to the Original Products and Contact ORICO Customer Care Team if any Further Concern. Thank you very much.

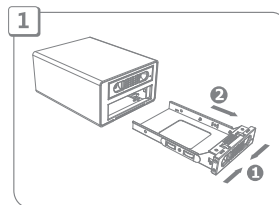
## About this Product

ORICO 3529RUS3 Tool Free Aluminum 3.5 inch SATA Hard Drive RAID Enclosure fit 2 x 3.5 inch SATA I/II/III Hard Drive or SSD, Tool Free Construction allow to mount or unmount Drive in seconds with no additional Tools, It's Ideal Design to manage Massive Files and Drives.

ORICO 3529RUS3 Built-in Hardware RAID Controller support RAID (Redundant Array of Independent Disks) Level RAID 0, RAID 1, Big and Normal. Big multiple disk drive components into a logical unit for the purposes of data redundancy and performance improvement, Provide various Applicability.

ORICO 3529RUS3 with USB3.0 and eSATA Dual Super Speed Ports support Connectivity up to 5Gbps which is 10x Faster to USB2.0. Helps to Transfer your files in a breeze. If you are looking for a solution to manage all your 3.5 inch SATA Drives or Backup your Files, This Aluminum Hard Drive RAID Enclosure is the Must-Have-Device that should Set on your Desk.

## Installation Guide

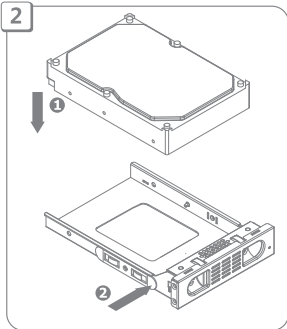


1. Press and pull the Lock of tool free hard drive tray as following instruction shows to Remove the Tray from the Enclosure.

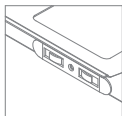


Locked

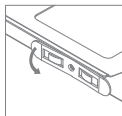
Unlocked



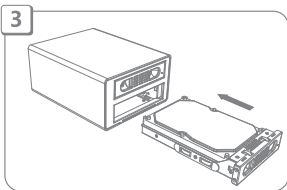
2. Mount your drive to the tray as following instruction shows.



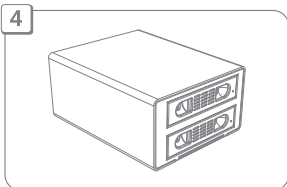
Make sure the clips locked properly



Clips not locked properly



3. Insert the tray and the drive to the enclosure.



4. Done.

## Build RAID

### About RAID

- ORICO 3529RU3 Support RAID Level RAID 0, RAID 1, Big and Normal.
- RAID 0=Combine All Drives in the Enclosure and Increase Performance.
- RAID 1=One Drive is been using while another one is working as a Backup Drive. RAID 1 will not Increase Performance However it is Providing Great Safety, It is support Self-Recovery (RAID 0, Big and Normal do not support this Function), When any Drive of RAID 1 is Failed or Error. Replace the Failure or Error Drive with a Similar or Larger Drive (New one or Format it before mount it to the Enclosure ) will get the RAID and Files Self-Recovered. Note. RAID 1 Require 2x Drives and can need 2x Drives ONLY.
- Big=Simply Combine All Drives in the Enclosure. However it will not Increase Performance
- Normal=All Drives in the Enclosure is not set to any RAID. Each Drive will show in Computer as an Individual Disk.
- Two or More Drives are required for RAID 0, RAID 1, Big.
- Set Up a New RAID or Change to another RAID will get all Drives Formatted, All Files in the Drives or RAID will lost. So, Please ensure you do have Backup all Files before Set Up or change RAID.
- Please Lock Drives in the Right HDD Slots and do not mount them to another Slot. A change of the Drive's Slot may cause Failure or Damage to RAID.
- PLEASE DO NOT Eject any Drive of a Running RAID Enclosure. Eject any Drive of the RAID may cause Failure or Damage.
- Drive under Level "Normal Level" is Individual Disk. Drive will work when other Drives Ejected, However Eject any Drive or Add a New



Drive will Restart the Enclosure and Drives. Always Eject or Add Drive when the Enclosure is Powered OFF is Recommended.

- Please ensure you DO HAVE Set the Enclosure and Drives to Normal before Set Up Any RAID Level.
- Please Caution when Set Up RAID or any Operation about Drives and RAID. Any Failure, Error or Damage about Disk, RAID and files may happen anytime. Always Backup your Files is Recommended.

## What is RAID

RAID (Redundant Array of Independent Disks) is a storage technology that Big multiple disk drive components into a logical unit for the purposes of data redundancy and performance improvement. Data is distributed across the drives in one of several ways, referred to as RAID levels, depending on the specific level of redundancy and performance required. RAID is now used as an umbrella term for computer data storage schemes that can divide and replicate data among multiple physical drives: RAID is an example of storage virtualization and the array can be accessed by the operating system as one single drive. The different schemes or architectures are named by the word RAID followed by a number (e.g. RAID 0, RAID 1). Each scheme provides a different balance between the key goals: reliability and availability, performance and capacity. RAID levels greater than RAID 0 provide protection against unrecoverable (sector) read errors, as well as whole disk failure.

## Standard Levels

A number of standard schemes have evolved. These are called levels. Originally, there were five RAID levels, but many variations have evolved-notably several nested levels and many non-standard levels

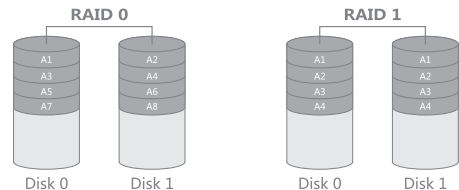
(mostly proprietary). RAID levels and their associated data formats are standardized by the Storage Networking Industry Association (SNIA) in the Common RAID Disk Drive Format (DDF) standard.

### RAID 0

RAID 0 comprises striping (but no parity or mirroring). This level provides no data redundancy nor fault tolerance, but improves performance through parallelism of read and write operations across multiple drives. RAID 0 has no error detection mechanism, so the failure of one disk causes the loss of all data on the array.

### RAID 1

RAID 1 comprises mirroring (without parity or striping). Data are written identically to two (or more) drives, there by producing a "mirrored set". The read request is serviced by any of the drives containing the requested data. This can improve performance if data is read from the disk with the least seek latency and rotational latency. Conversely, write performance can be degraded because all drives must be updated; thus the write performance is determined by the slowest drive. The array continues to operate as long as at least one drive is functioning.



## How to Set Up RAID

RAID can be Set through Control Switch on Rear Panel or ORICO HW RAID Manager. Both of them can help you Set Up RAID in Seconds. Remind-Please ensure you do have backup all files in Drives before Set Up RAID.

### Set Up RAID via Control Switch on Rear Panel

1. Turn OFF the Enclosure, Turn the Control Switches on Rear Panel to "Normal". Then Press &Hold the "Set" Button and Turn ON the Enclosure. Hold the Set Button for 10 Seconds and The Enclosure will switch to Normal Level. A Beep will let you know the Setting is Done and you can Release the Set Button when you heard it.
2. Turn OFF the Enclosure, Turn the Control Switches to the Right RAID Level you wanna Set. Then Press &Hold the Set Button on Rear Panel and Turn ON the Enclosure. Hold the Set Button for 10 Seconds and The Enclosure will switch to Right RAID Level. A Beep will let you know the Setting is Done and you can Release the Set Button when you heard it.
3. RAID or Drives will show up in Computer soon after the Setting is Done. Then Initialize and Format New Drives or RAID will get them Ready to Use. If they are not show up as expected, Please Restart the Enclosure with Drives and your Computer, Or Try to set the RAID Again. Do remember to contact ORICO Customer Support if you have any further issue.

### Set Up RAID via ORICO HW RAID Manager

1. Load ORICO HW RAID Manager Utility from the Driver CD or Download it from ORICO Website. Utility for both Windows, Mac

OS and Linux are included, Please ensure you are loading the Right Utility for your System. The following Direction will describe how to Set Up RAID through ORICO HW RAID Manager Under Microsoft Windows.



2. Turn OFF the Enclosure and Drives. Run Setup.exe in Folder of ORICO HW RAID Manager for Windows and Click "Install" to Install the ORICO HW RAID Manager. Click "Finish" when the Installation is Finished. Note. A Restart of your Computer may needed when the Installation is Finished.



3. A Shortcut of ORICO HW RAID Manager will show on your Desktop when the Installation is Finished. Turn ON the ORICO Enclosure with Drives and run ORICO HW RAID Manager can start the Setting or Management of RAID Level to the Enclosure.

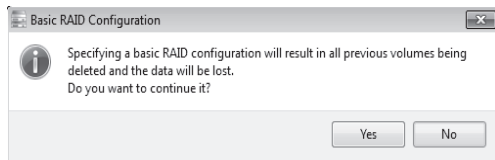


4. "Basic RAID Configuration" Under "Basic Mode" will show the Information of your RAID and help you Set Up your RAID. Available RAID Levels will show here too. Select the RAID Level you Preferred and Click "Apply" Button at Bottom-Right will set up your RAID.



## Note

- 4.1 Some RAID Levels will not Available here since the Drives can't Set Up to those RAID Levels. For Example, RAID 10 do need 4 Drives. However ONLY 2 Drives been Mounted here. The Two Drives can't Set Up to RAID 10, So the RAID 10 Level will not Available here.
- 4.2 Please Select "Delete All RAID", Then Click "Apply" to Set the Enclosure with Drives to "Normal Level" if you do have Set Up RAID and would like to Switch to other RAID Levels.
- 4.3 Select your RAID Level, Select "Support Password" and input the Password, Then Click "Apply" Button will help you Set Up your RAID and set a Authority Password for it. The Authority Password can't Encrypt your RAID, Drives or Files, However it will be needed when change to other RAID Levels through ORICO HW RAID Manager. The Authority Password will help you Avoid any Un-Authorized or Un-Expected Change to your RAID and Drives.
5. The Following Popup with a Remind will come up when Applied your RAID Level. Please ensure you do have Read it and Click "Yes" if you do wish to Set Up the RAID. Click "No" will end the Processing.



6. The Configuration will Finish Automatically in Minute. A Popup will shows up to let you know when the setting is finished.



7. RAID or Drives will show up in Computer soon after the Setting is Done. Then Initialize and Format New Drives or RAID will get them Ready to Use. If they are not show up as expected, Please Restart the Enclosure with Drives and your Computer, Or Try to set the RAID Again. Do remember to contact ORICO Customer Support if you have any further issue.



7. RAID or Drives will show up in Computer soon after the Setting is Done. Then Initialize and Format New Drives or RAID will get them Ready to Use. If they are not show up as expected, Please Restart the Enclosure with Drives and your Computer, Or Try to set the RAID Again. Do remember to contact ORICO Customer Support if you have any further issue.



8. "Email Notification and Event Settings" under "Advanced Mode" will help you set Email Notification and Rules of Notification. However please kindly understand that "Email Notification" is not Available now. Our Engineers is working on that now and we will let you know once it is ready.



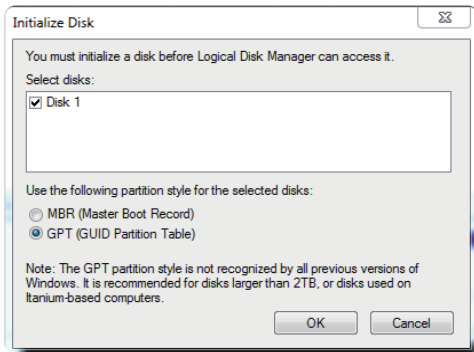
9. "Firmware Information" under "Advanced Mode" will shows the Information of the Enclosure, Firmware etc. Additionally you can update the Latest Firmware from here. Receive the Latest Firmware from ORICO or Download it from ORICO Website, Then Click "Browse" Button to Select the Firmware and Click "Update" Button will Apply the Latest Firmware. When Applying Firmware Update, Backup Files and Switch to Normal Level is Recommended.



## Initialize and Format New Drives under Microsoft Windows

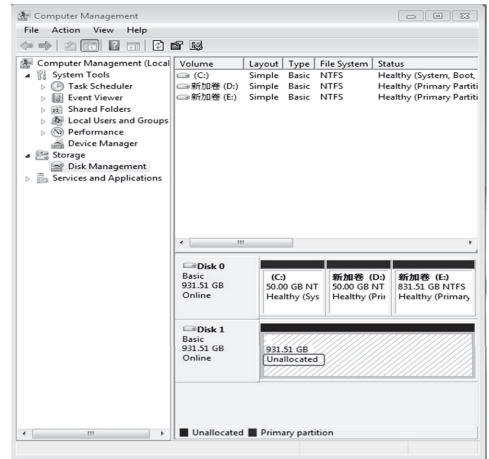
New Drive or RAID need to be Initialized and Formatted or it won't work for us. Please follow the following Direction to Initialize and Format your Drive Under Microsoft Windows if you are using a New Drive or Setted a New RAID.

1. Please ensure you have mounted Drive to ORICO Enclosure and Attach the Enclosure with Drive to Computer Properly. Then Right click on computer, Select "Manage", Open "Disk Managemen" in "Storage" of opened windows. A Popup will Come Up Here Suggests a New Drive need to be Initialized. Please Select the Disks and Click OK will get it Initialized.

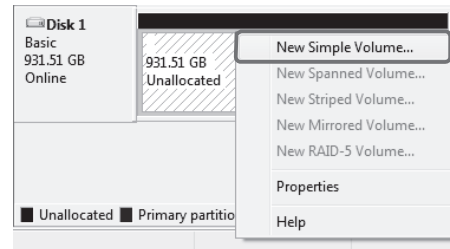


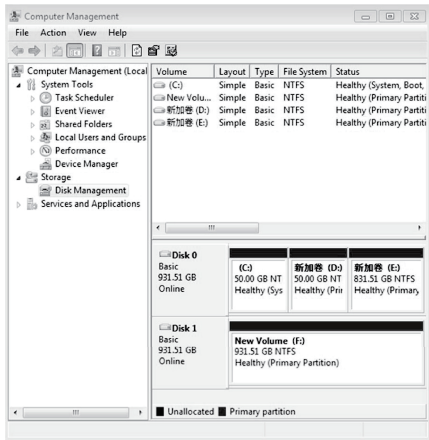
Note

- A. If you are Mounting a Drive which not Larger than 2TB and May using on a Windows Vista or Eariler Computer, Initialize with Partition Style MBR is Recommended.
  - B. If you are Mounting a Drive which Larger than 2TB, Please Initialize with Partition Style GPT. Or you will get 2TB of the Drive Applicable and the Rest will be unable to Use.
  - C. If you Closed this Windows by Mistake or the Windows have never come up, Right Click on the "Disk Number" and Select "Initialize Disk" will get the Windows come up.
2. Any HDD or SSD attached to this Computer will shows in "Disk Management" we opened in Step 1. The Unallocated Drive is your New Drive which need to be Formatted.

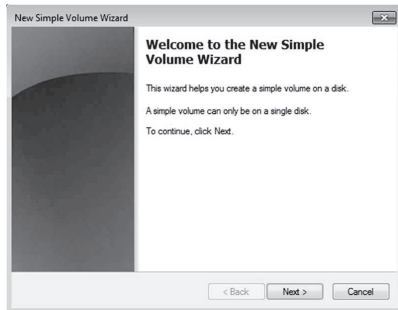


3. Right Click on Unallocated New Drive, Select "New Simple Volume" will start to Add New Volume and Format it.

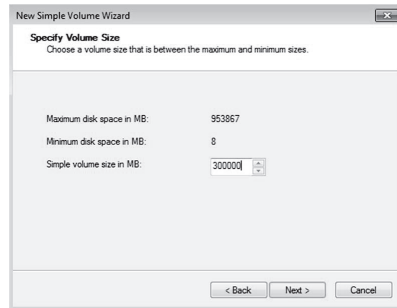




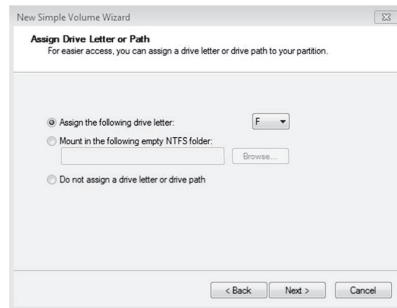
4. Click "Next".



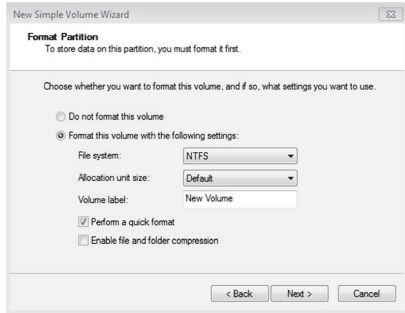
5. Set the Volume Size of your New Volume. You can Customize the Size. Or You can Set the Size of the Volume at Maximum Disk Space to Set the Drive to One Volume.



6. Assign New Drive Letter for the New Volume. Drive Letter such as C, D, E, F, G will shown in Computer and Explorer for Application.



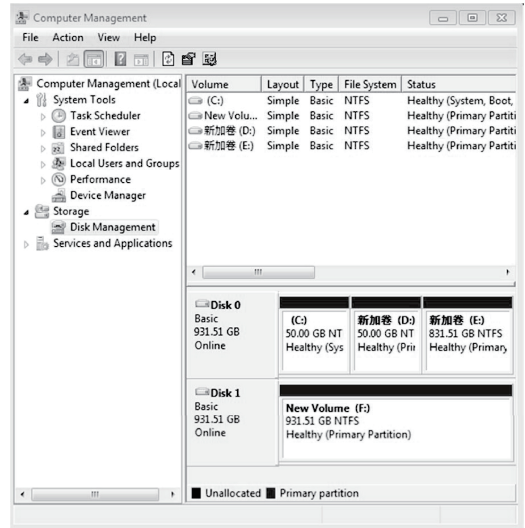
7. Format your New Volume. You can choose the File System (NTFS or FAT32) , Allocation Unit Size and Volume Label Perform a Quick Format is Recommended. Please click "Next" when Everything is Configured.



8. Click "Finish" will Start to Format the Volume.



9. The Formatting will take 5 to 30 Seconds. When the Formatting is Done, The New Volume will be Ready for Application.



10. If you have not Set the Size of the Volume at the Maximum Disk Space. The Rest Space of the Drive will be Unallocated and you can Repeat Step 3 to 9 to get them Created and Formatted.



## Trouble Shooting

Please try the following Steps if Drives can't be Mounted Properly.

- A. Please check if USB Hosts of Computer are working Properly. Attach ORICO Device and Drive to Rear USB Hosts is Recommended if you are using a Desktop Computer.
- B. Mount ONE Drive for Test is Recommended. Please check if the ORICO Device will works well when ONE Drive Mounted to HDD Slot 1.
- C. Please ensure the Cable and Power Adapter attached properly.
- D. Please check if the LED of ORICO Device will on or not when Drive Mounted and Powered On.
- E. Please ensure the Drive have been Formated Properly. Right click on computer, Select "Manage", Open "Disk Managemen" in "Storage" of opened windows will shows any Drive mounted to your Computer and if they are Formated or Not. Please follow the Direction of "Initialize and Format New Drives under Microsoft Windows" if you are mounting New Drives.
- F. Please Test the ORICO Device and Drive works well with other USB3.0 or 2.0 Hosts or another Computer if available.
- G. Please Test the ORICO Device and Drive works well with other USB3.0 Cable or USB2.0 Cable for Printer if available.
- H. Please Test the ORICO Item with another 12V Power Adapter if Available.

If any Issue Remains, Please Contact ORICO Customer Care Center and let us Know the Detailed info of your Drive and Computer with a Screen Shot of "Disk Management" & "Disk Drives" under "Device Manager". ORICO Customer Care Center will always be here to help.

ORICO Customer Care Center Website: <http://oricoonline.us> ORICO

Customer Care Team: [Supports@orico.com.cn](mailto:Supports@orico.com.cn)

Tel: 86-755-25196059

## FCC and CE Radiation Norm

### FCC

This equipment has tested and found to comply with the limits for Class B digital device pursuant to Part 15 of Federal CommunicationsCommission (FCC) rules.

### CE

This equipment has tested and found to comply with the limits of the European Council Directive on the approximation of law of themember states relating to electromagnetic compatibility (89/336/EEC) according to EN 55022 Class B.

### FCC and CE Compliance Statement

These limits are designed to reasonable protection against frequency interference in residential installation. This equipmentgenerates,uses and can radiate radio frequency energy, and if not installed or used in accordance with the instructions, may cause harmful interference to radio communication, However, there is no guarantee that interference will not occur in television reception,which can be determined by turning the equipment off and on.The user is encouraged to try and correct the interference by one ormore of the following measures: Reorient or relocate the receiving antenna increase the separation between the equipment and the receiver Connect the receiver is connected to.

### CAUTION!

The Federal Communication Commission warns the user that changes or modifications to the unit not expressly approved by the party responsible for compliance could void the user's authority to operate theequipment.

### Disclaimer Statement

Thank you for your choice to purchase and use ORICO products! Please read this user manual carefully before usingthe product, to ensure correct operation method. We strongly recommend you to make data backup before using this product so as to make sure your data are completely safe. As the equipmentmanufacturer, ORICO do not afford any direct or indirect responsibility for documents and data lose caused by any factor. Manufacturers do not have the obligation to afford any compensation and data recovery. ORICO Technologies Co., Ltd do not make special promise tousers and distributors, ORICO do not afford any unexpected data lose, direct or indirect loss. If you start to use this product, that meansyou understand and accept this disclaimer!

**Copyright description:** All ORICO products and relative datas belong to ORICO Technologies CO.,LTD. ORICO have the right of produce and copyright, reproduction is prohibited. This user manual includes, but not limited to all information with copyright protection, without permission from ORICO, no one is allowed to done, copy, excerpt, translationor usefor other things.

This user manual does not have any form of warranty, position statement or other hint. If there is any direct or indirect data lose,economic loss or enterprise bankruptcy caused by this user manual or its product information mentioned, ORICO and its staff will not afford any responsibility for that. Besides, the product specification and information mentioned in this user manual are just for your reference, and contents will update at any time without further notice. ORICO will not take responsibility for any error or negligence in this user manual.

The product name mentioned in this user manual can be only used for identification, and this name may be part of the other company's registered trademark or production rights.When below two situations happened, this product will not have ORICO's warranty and service.

(1) The product does not belong to ORICO's authorization of warranty, specification alteration and parts replacement.

(2) Product bar code is vague or lost.

The user manual will update as the product specification or driver's change. Please visit the ORICO official website to get the details: [www.orico.com.cn](http://www.orico.com.cn).