



95RU3 Series

3.5寸外置硬盘柜

3.5 Inch External HDD Enclosure

用户指南

User Manual



官方网站



Website

深圳市元创时代科技有限公司 (ORICO Technologies Co.,Ltd.)

电话 / Tel: 86-755-25196059

邮箱 / E-mail: supports@orico.com.cn

官方网站: <http://www.orico.com.cn>

Official Website: <http://www.orico.cc>

执行标准: GB 4943.1-2011

公司地址: 深圳市龙岗区布吉街道甘李工业园甘李六路12号中海信创新产业城14A栋903-904

Company Add: 903-904, 14A, Zhonghaixin Innovation Industrial Park, 6th Gan Lee Road, Buji, Longgang District, Shenzhen, China

工厂地址: 东莞市常平镇塘角村塘角路24号元创动力产业园D栋3楼

Factory Add: 3/F, Block D, Internet & Creativity Industrial Park, No.24 Tangjiao Rd, Changping Town, Dongguan, China

目录

中文说明书	1-11 页
产品清单	2
产品简介	2
规格参数	3
产品特点	3
产品图示	4
组建 RAID	5
通过 ORICO HW RAID Manager 管理软件设置	8
注意事项	12
移除设备	12
硬盘格式化分区操作	13
产品故障排除	16
安全须知	16
产品保修	17
声明	18

English Manual.....	P19-36
---------------------	--------

感谢您选择 ORICO !

在您使用本产品前, 请仔细阅读这一份使用说明书!

产品清单

1. 产品本体	1PCS
2. 数据线	1PCS
3. 电源线 / 电源适配器	1PCS
4. 门板钥匙	2PCS
5. 使用说明书	1PCS
6. 感谢卡	1PCS

因产品生产批次不同, 产品包装、外观或者配件可能会有所变更, 并与此使用说明提供的图片、外观、说明不一致, 请您以收到的实际产品为准, 若由此给您带来不便请您谅解, 谢谢!

产品简介

ORICO 95 系列 RU3 是一款支持多盘位阵列硬盘柜支持 3.5 寸 SATA 硬盘的外接存储柜, 可以同时读写多个硬盘, 高质感全铝合金材质能够充分的解决硬盘散热, 免工具设计安装 3.5 寸 SATA 硬盘, 产品加上一个静音风扇能够更好的帮助硬盘散热, 同时过流、短路保护的电路设计方式, 避免硬盘损坏, 保护数据安全。该系列产品同时集成 RAID 0,RAID 1,RAID 3,RAID 5, RAID 10,Big 和 Normal 七种模式, RAID 0 模式可为您提供极速的文件传输体验, RAID 1 模式则可为您提供安全的文件备份, RAID 3 和 RAID 5 是创建安全备份的最经济之选, RAID 10 则是 RAID 1 和 RAID 0 合体; Big 模式可帮您将多个硬盘合一, 更便于资料管理, Normal 模式则为常规模式, 所有硬盘未组成任何 RAID 或组, 可分别独立运行。在传输方面, USB3.0 超高速接口理论传输速度可达 5Gbps。

规格参数

产品型号	95RU3 系列
产品材质	铝合金
表面处理	磨砂
输入接口	SATA3.0
输出接口	USB3.0 Type-B
传输速率	5Gbps
数据线	USB Type-A/M To USB Type-B/M
产品供电	9558RU3 AC100-240V 电源线 9548RU3 AC100-240V 电源线 9528RU3 12V==3A 电源适配器
产品尺寸	9558RU3 264(L)×146(W)×199.5(H)mm 9548RU3 264(L)×146(W)×164.5(H)mm 9528RU3 235(L)×145(W)×93.5(H)mm

产品特点

1. 免工具设计，支持热插拔，即插即用；
2. 采用 SATA3.0 6Gbps 桥接方案；
3. USB 传输接口符合 USB3.0 标注规格，最高支持 5Gbps 传输速率；
4. LED 指示灯监控，任意随时监视硬盘的工作状态；
5. 自带锁孔 开窗式设计，保护您的数据安全；
6. 五盘位、四盘位内置 150W 大功率电源供电内置；
7. 五盘位、四盘位支持 7 种 RAID 模式，RAID 0, RAID 1, RAID3, RAID 5, RAID 10, Big 和 Noramal 模式；
8. 双盘位支持 4 种模式，RAID 0, RAID 1, PM, SPAN；
9. 支持智能休眠技术，节能环保，提高硬盘使用寿命；
10. 支持热插拔，即插即用。

产品图示

9528RU3

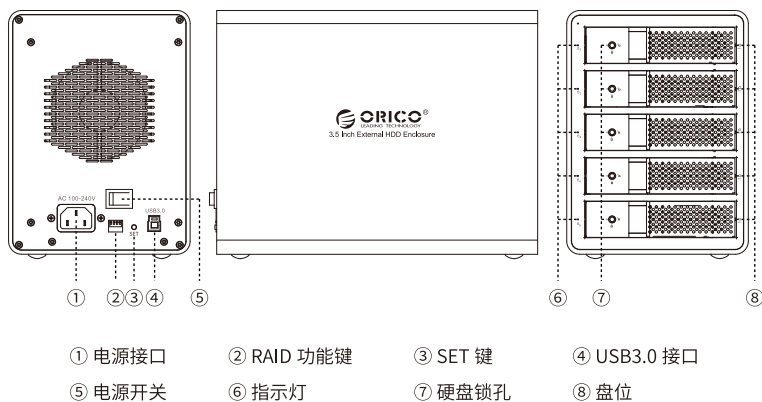


- ① 电源接口 ② USB3.0 接口 ③ RAID 功能键 ④ SET 键
⑤ 电源开关 ⑥ 指示灯 ⑦ 硬盘锁孔 ⑧ 盘位

9548RU3



- ① 电源接口 ② RAID 功能键 ③ SET 键 ④ USB3.0 接口
⑤ 电源开关 ⑥ 指示灯 ⑦ 硬盘锁孔 ⑧ 盘位



组建RAID

• 注意事项

1. RAID 模式讲解。

本产品支持 RAID 0, RAID 1, RAID 3, RAID 5, RAID 10, Big 和 Normal 七种模式。

RAID 0 = 将硬盘盒内的所有硬盘容量合并，并提升性能（读写速度）。

RAID 1 = 硬盘盒内的两个硬盘互为备份，不提升型号（读写速度），但是安全性优异，支持自我修复（RAID 0 和 Big 不支持此功能），可以在其中一个硬盘发生错误或故障时，确保资料仍可被修复、不会造成资料丢失。

注：RAID 1 只支持两个硬盘。

RAID 3 和 RAID 5 需要 3 块或 3 块以上硬盘，其中的一块硬盘将用于备份资料，其余的硬盘容量合并，供您使用。

RAID 3 或 RAID 5 不但可以确保资料安全性，同时带来一定的性能提升，最经济的 RAID 组建方案，适合大多数用户的需求。

RAID 10 = RAID 0 + RAID 1

Big = 将硬盘盒内所有的硬盘容量合并，以方便管理，但是并不提升性能。

Normal = 常规正常状态，硬盘盒内的所有硬盘未组成任何 RAID 模式，独立运行。

2. RAID 模式需要两个或更多硬盘。

3. 设置或更改 RAID 模式时会将本产品内所有硬盘的文件全部清空，因此，设置或更改 RAID 前，请先备份所有资料。

4. 请勿更改 RAID 状态下的硬盘盘位顺序，以免影响 RAID 模式的稳定允许。

5. RAID 模式运行时，请勿弹出硬盘盒内的硬盘，如需弹出硬盘，请先从计算机中安全删除硬件并弹出媒体，然后关闭硬盘盒的电源，在弹出硬盘。

6. Normal 模式下的所有硬盘未组成任何 RAID 模式，硬盘盒内的所有硬盘均为独立的磁盘工作以及显示在计算机中。需要注意的是：此模式下如果弹出其中任何一个硬盘或是插入一个硬盘，将会使硬盘盒重启，其他所有硬盘的连接也暂时中断。建议在硬盘盒断电时弹出或者增加硬盘。

7. 设置或更改 RAID 时，请确保硬盘盒和硬盘处于 Normal 模式下，或者先设置硬盘盒到 Normal 模式之后方可设置或更改到您需要的 RAID 模式。

8. 请勿更改 RAID 状态下的硬盘顺序，以免影响硬盘资料丢失。

9. 硬盘为精密设备，RAID 也是精密的系统，请时刻备份好您的重要资料，并谨慎操作，以免任何错误或不当的操作造成的数据错误或丢失。

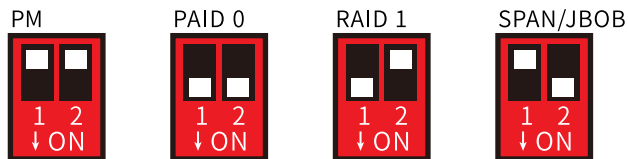
• 通过 RAID 控制开关设置 RAID

1. 关闭硬盘盒和硬盘，切换产品背部接口的 RAID 控制开关到“Normal”位置，然后按住“Set”按钮并打开硬盘盒的电源开关，大约 10 秒钟之后硬盘盒即会成功切换至 Normal 模式，设置完成后硬盘盒蜂鸣器会响一声。
2. 再次关闭硬盘盒和硬盘，切换产品背部接口的 RAID 控制开关到需要设置的 RAID 模式位置，然后按住“Set”按钮并打开硬盘盒的电源开关，大约 10 秒钟之后硬盘盒即会成功切换至需要设置的 RAID 模式，设置完成后硬盘盒蜂鸣器会响一声。
3. 已经完成 RAID 设置的硬盘或硬盘组稍后即会显示到计算机中，在初始化和分区并格式化之后，即可开始使用。如果硬盘或硬盘组未显示在计算机中，请尝试重启硬盘盒已经计算机，或者尝试重新设置 RAID 模式。

按住“SET”键不放，然后开机启动硬盘盒，大约 10 秒后松开 SET 按键，即组建 RAID 模式成功。

注意：组建 RAID 成功后，会生成一个新的硬盘，必须先进行初始化、格式化分区之后，才可以正常使用。

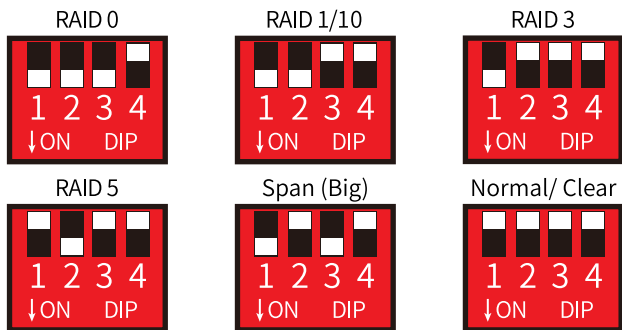
9528RU3 阵列模式



(注：白色为功能按键)

PM (上 - 上) RAID 0 (下 - 下) RAID 1 (下 - 上) SPAN (上 - 下)

9548RU3、9558RU3 阵列模式

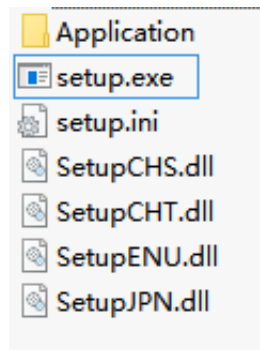


(注：白色为功能按键)

RAID 0 (下 - 下 - 下 - 上) RAID 1/10 (下 - 下 - 上 - 上) RAID 3 (下 - 上 - 上 - 上)
 RAID 5 (上 - 下 - 上 - 上) Span(Big) (下 - 上 - 下 - 上) Normal (上 - 上 - 上 - 上)

通过ORICO HW RAID Manager管理软件设置

1. 从 ORICO 官方网站下载，并运行 ORICO HW RAID Manager 安装程序，如果管理软件是压缩包，需要先解压之后在运行。

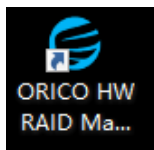


2. 关闭硬盘盒，运行 ORICO HW RAID Manager 安装程序中的 Setup.exe 并依照下图指引开始安装。安装完成之后，可能需要重启您的计算机。





3. ORICO HW RAID Manager 管理软件的快捷方式将会在安装完成之后出现在桌面上，请开启硬盘盒以及硬盘的电源，并双击即可运行管理软件即可开始设置或管理 RAID。



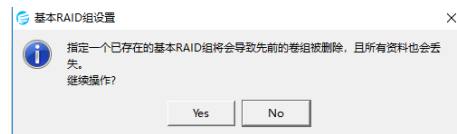
4. 点击下图左侧框中的图标即可打开基础 RAID 设置界面。界面中间的会列表当前可设置的 RAID 模式，点击需要设置的 RAID 模式，然后点击应用即可设置到您需要设置的 RAID 模式。



注意：

开始设置您需要的 RAID 模式之前，请确保硬盘盒和硬盘处于 Normal 模式下，或者先设置硬盘盒到 Normal 模式之后方可设置或更改到您需要的 RAID 模式。

5. 弹出的以下窗口点“Yes”即可设置上一步中选定的 RAID，点“NO”即可取消设置。

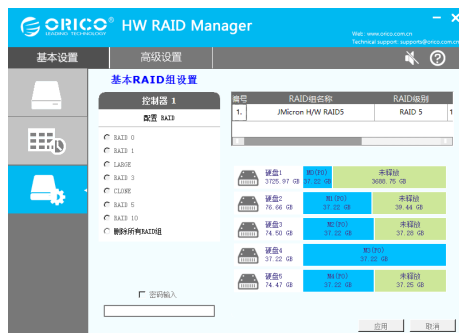


6. 上一步点击“Yes”之后，设置将自动进行，以下进度条会告知设置完成进度。设置完成后，将会弹出提示窗口告知您设置已经完成。





7. 已经完成 RAID 设置的硬盘或硬盘组稍后即会显示到计算机中，在初始化和分区并格式化之后，即可开始使用。（如果硬盘或硬盘组格式化不成功，请尝试重启硬盘盒以及计算机，或者尝试重新设置 RAID 模式。）



8. 点击下图的高级选项可打开“邮件通知设置”，非常抱歉此部分的功能暂时无法使用，我们在此功能可正常使用之后第一时间通知您。



注意事项

1. 硬盘是精密设备，请预先阅读其使用说明书并正确操作。
2. ORICO 移动硬盘柜是电子产品，请勿自行拆卸、维修。
3. 请避免强烈摔打、碰撞或在高温、低温、潮湿、多尘及长期暴露在阳光下使用。
3. 如果您使用的新买的硬盘，则需要在硬盘初始化后可以正常使用。

移除设备

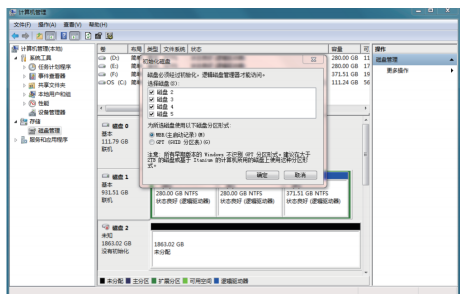
注意：请勿强行移除硬盘柜以及硬盘，以免造成资料或磁盘错误，损坏或丢失。

1. 在 Windows 系统中移除设备
停止使用设备，点击任务栏右下角的“安全移除硬件和媒体”按钮，然后点击要移除的设备。当系统提示“安全移除硬件”时，即表示已经成功从系统这种移除，从计算机中拔出设备。
2. 在 Mac OS 中移除设备。
停止使用设备，并选中要移除的设备，然后移动到垃圾桶中即可

硬盘格式化分区操作

使用全新的硬盘需要先初始化、格式化分区，否则无法正常工作。如果是全新的硬盘，请按照以下方法对硬盘进行初始化、格式化分区。

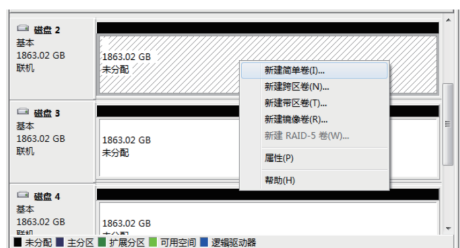
- (1) 请确保 ORICO 硬盘柜已经正确安装，连接到了电脑；
- (2) 鼠标右击“计算机”，然后选择“管理”，在打开的新窗口中找到“磁盘管理”，自动弹出了初始化新硬盘的窗口，选择“MBR”或“GPT”分区形式，点击“确认”；



注意：

- 如果硬盘容量小于 2TB，请使用 MBR 硬盘分区形式初始化硬盘；
- 如果硬盘容量大于 2TB，则必须要使用 GPT 硬盘分区形式初始化硬盘，否则将只有 2TB 容量可用，多余的容量无法使用。

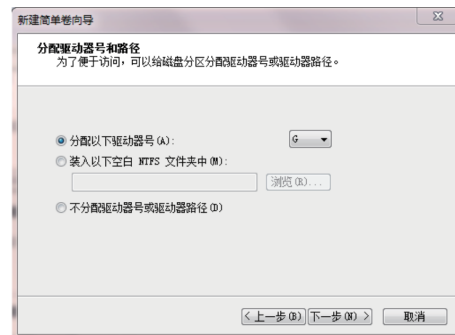
- (3) 鼠标右击“未分配”的硬盘空间，选择“新建简单卷”开始给硬盘分区格式化；



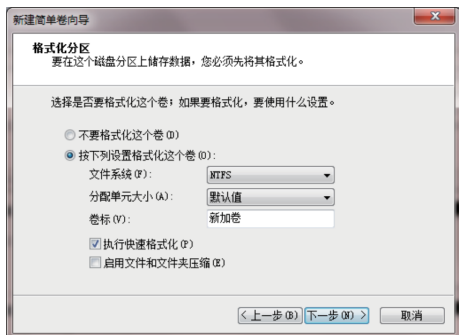
- (4) 设置硬盘分区的容量大小，可自定义分区容量，或者默认设置最大简单卷大小，将会只有一个硬盘分区；



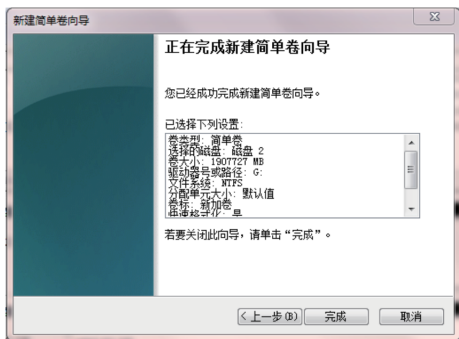
- (5) 分配硬盘盘符和路径，（如：资源管理器 C, D, E, F, G 盘）盘符；



(6) 格式化分区，可以设置文件系统格式（NTFS、FAT32 或 exFAT），分配单元大小（默认即可），卷标名称，推荐“执行快速格式化”，配置完成，点击“下一步”；



(7) 点击“完成”执行最后的格式化分区操作；



(8) 格式化将需要 5-30 秒钟，格式化完成后将会在资源管理器显示新的分区盘符。



产品故障排除

- 产品如有出现在计算机内不能识别的情况下可以根据以下 2 带你进行相应的处理方式；
- 在 XP 系统下，由于 XP 本身的系统限制，超过 2TB 容量硬盘不能正常使用，可更新系统到 WIN7 使用即可；
- 如已经在 WIN7 系统下使用不能显示硬盘，可以先看看硬盘是不是全新硬盘，新硬盘需要在计算机管理内进行硬盘初始化后方可使用

安全须知

1. 请勿撞击、扔掷、针刺本产品，并避免跌落、挤压、弯曲产品。
2. 请勿在潮湿环境中使用或储存本产品，并避免本产品被液体浸湿或冲洗。
3. 请勿在高温、高粉尘环境中使用产品，并远离火源。
4. 请勿将本产品放置在日光中曝晒。
5. 请勿将本产品置于有腐蚀性物品的环境，严禁使用其他化学溶液清洗本产品。
6. 请将产品及附件放在儿童触摸不到的地方，请勿让儿童在无人监管的情况下使用产品。
7. 请勿擅自拆卸和维修产品及附件，只有授权机构才可维修本产品。
8. 本产品使用过程中如有任何问题，可随时与您的经销商或 ORICO 客户服务中心联系。

保修条款

本产品依照《中华人民共和国消费者权益保护法》和《中华人民共和国产品质量法》，实行售后三包服务，服务内容如下：

1. 自签收之日起 7 日内，产品出现性能故障并由 ORICO 客户服务中心鉴定之后，可享受退货、换货或免费维修服务。
2. 自签收之日起 15 日内，产品出现性能故障并由 ORICO 客户服务中心鉴定之后，可享受换货或免费维修服务。
3. 自签收之日起 12 个月内，产品出现性能故障并由 ORICO 客户服务中心鉴定之后，可享受免费维修服务。

保修限制条款

深圳市元创时代科技有限公司保修条款不适用于以下情况：

1. 超过保修条款期限。
2. 未经授权拆解、改动或维修过的产品，以及碰撞、进液、摔坏等人为损坏。
3. 水灾、火灾、雷击、地震等不可抗力造成的损坏。
4. 与本使用说明不一致的错误操作。
5. 产品或包装盒条码与实物不符，以及被涂改、撕毁。
6. 未经授权使用非原装配件造成的损坏。
7. 无有效的购买凭证。

声明

深圳市元创时代科技有限公司，版权所有

感谢您购买 ORICO 产品，为了更好的使用本产品的所有功能，请您在使用产品之前仔细阅读本使用说明介绍的产品功能、使用说明以及注意事项。

ORICO® 为深圳市元创时代科技有限公司注册商标。

本使用说明中提及的其他所有产品名称、商标、服务名称和公司名称，由其各自的所有者拥有。

本使用说明所提及的信息仅供参考，深圳市元创时代科技有限公司保留随时修改本使用说明中任何信息的权利，无需提前通知。除非有特殊约定，本使用说明仅作为使用指导，本使用说明中的所有陈述、信息等均不构成任何形式的担保。

深圳市元创时代科技有限公司不对因使用本使用说明相关内容及本使用说明描述的产品而产生的任何特殊的、附带的、间接的、继发性的损害进行赔偿，也不对任何利润、数据、商誉或预期节约的损失进行赔偿。在相关法律允许的范围内，在任何情况下，深圳市元创时代科技有限公司对您因为使用本使用说明描述的产品而遭受的损失的最大责任（除在涉及人身伤害的情况下根据适用的法律规定的损害赔偿外）以您购买本产品所支付的价款为限。

Catalog

English Manual.....P19-36

What is in the box.....	20
Product Introduction.....	20
Specifications.....	21
Product features.....	21
Product Illustration.....	22
Set up RAID.....	23
Set through ORICO HW RAID Manager Software.....	26
Attention.....	31
Remove the Device.....	31
Hard-drive Format Partition Operation.....	31
Failure Solutions.....	35
Notice.....	35
Declaration.....	36
FCC.....	36

Thanks for choosing ORICO!

Please read this user's manual carefully before using it!

What is in the box

1. The Product.....1PCS
2. Data Cable.....1PCS
3. Power Cord/Power Adapter.....1PCS
4. Key.....2PCS
5. User Manual.....1PCS
6. Thanks Card.....1PCS

The Product, Accessories and Package may Optimized for Better Application or Performance. We Sincerely sorry that they may not Exactly Match with what showing in Manual and Appreciate your Please Adhere to the Original Products and Contact ORICO Customer Care Team if any Further Concern. Thank you very much.

Product Introduction

ORICO 95 series RU3 is a multi-bay 3.5 inch SATA hard drive enclosure. Aluminum alloy material coupled with the quiet fan, making it a good heat-dissipation performance. Meanwhile, it is designed with over current, short-circuit protections for the disk and data. This series integrates RAID 0, RAID 1, RAID 3, RAID 5, RAID 10, Big and Normal modes. RAID 0 mode provides you with a fast file transfer experience, and RAID 1 mode provides you with safe file backup, RAID 3 and RAID 5 are the most ideal choice for creating secure backups, while RAID 10 is a combination of RAID 1 and RAID 0; Big mode can help you to combine multiple hard drives for easier data management. Normal mode is that all hard drives do not form any RAID or group and can run independently. In terms of transmission, the theoretical transmission speed of USB3.0 high-speed interface can reach 5Gbps.

Specifications

Model	95RU3 Series
Material	Aluminum Alloy
Surface	Frosted
Input	SATA3.0
Output	USB3.0 Type-B
Transmission Rate	5Gbps
Data Cable	USB Type-A/M To USB Type-B/M
Power Supply	9558RU3 AC100-240V Power Cord 9548RU3 AC100-240V Power Cord 9528RU3 12V---3A Power Adapter
Dimensions	9558RU3 264(L)×146(W)×199.5(H)mm 9548RU3 264(L)×146(W)×164.5(H)mm 9528RU3 235(L)×145(W)×93.5(H)mm

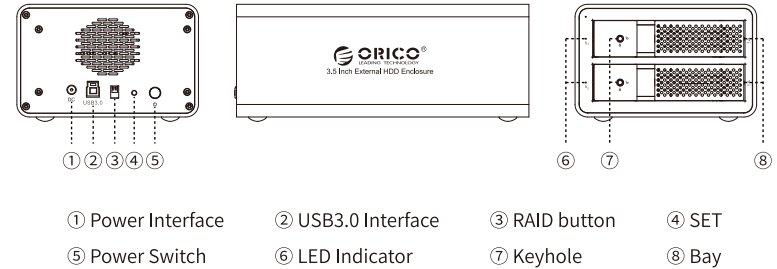
Product features

1. Tool-free installation, hot-swappable, plug and play.
2. Adopts SATA3.0 6Gbps bridging solution.
3. The USB transmission interface complies with the USB3.0 specification and supports up to 5Gbps transmission rate.
4. LED indicator, monitoring the working status of the hard disk at any time.
5. Built-in lock hole, fenestration design, protects your data.
6. The 5-bay and 4-bay versions are built-in 150W power supply.
7. The 5-bay and 4-bay versions support 7 RAID modes, RAID 0, RAID 1, RAID3, RAID 5, RAID 10, Big and Normal modes.
8. The dual-bay enclosure supports 4 modes, RAID 0, RAID 1, PM, SPAN.
9. Support intelligent sleep technology, energy saving and environmental protection, and improve the service life of disks.

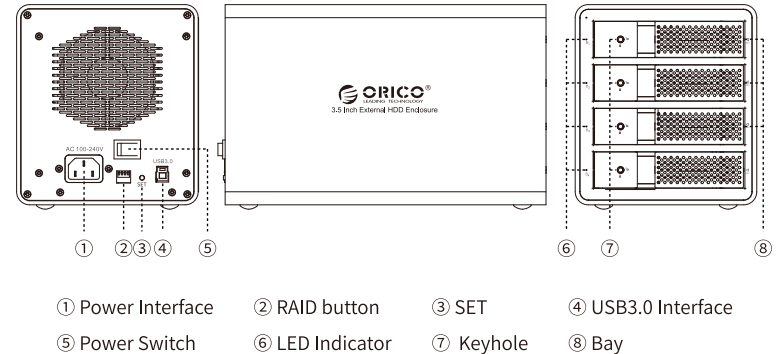
10. Hot-swappable, plug and play.

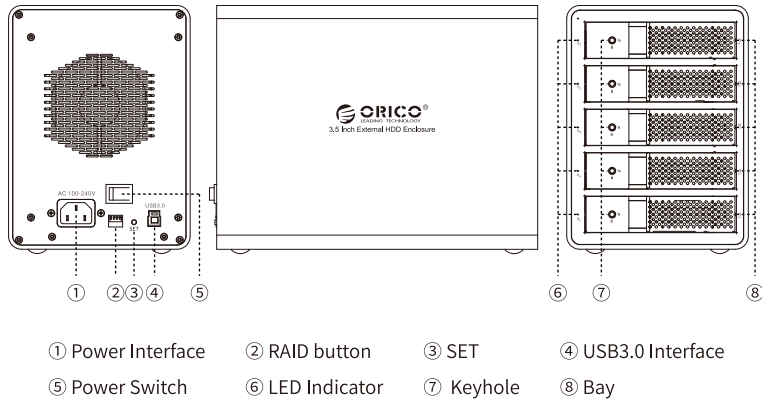
Product Illustration

9528RU3



9548RU3





Set up RAID

• Note

1. Introduction of RAID Mode

This product supports RAID 0, RAID 1, RAID 3, RAID 5, RAID 10, Big and Normal.

RAID 0: Merge all HDDs' capacity in the HDD enclosure and upgrade its performance (reading & writing speed).

RAID 1: Two HDDs in the HDD enclosure can backup each other, cannot upgrade its performance (reading & writing speed). And it can support self restoration function (RAID 0 and SPAN modes cannot support this function), which makes files restored when mistakes and faults occur.

PS: RAID 1 can only support 2 HDDs.

RAID 3 and RAID 5 require 3 or more hard drives, one of which will be used for backup data, and the remaining hard drives will be combined for your use.

RAID 3 or RAID 5 not only ensures data security, but also provides certain performance improvements. It is the most economical RAID solution and is suitable for most users.

RAID 10=RAID 0 + RAID 1

Big= Merge all HDDs' capacity in the HDD enclosure to make it easy to manage but cannot upgrade its performance.

Normal= Normal state, all HDDs in the HDD enclosure work independently without forming any RAID modes.

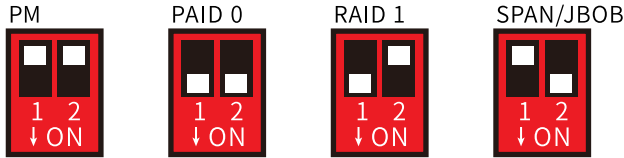
- RAID mode needs two or more HDDs.
- Please backup all files before setting or changing RAID mode, because all files stored in HDDs in the HDD enclosure will be cleared while operating this.
- Please don't change HDD bays' order under RAID mode to prevent its unstable running.
- Please don't remove the HDD in the HDD enclosure under RAID mode. You should delete the hardware and exit media on the computer before removing the HDD.
- All HDDs work independently and are displayed on computer without forming any RAID modes under Normal mode. Attention: Removing or inserting another HDD under this mode will restart the HDD enclosure and make other HDDs disconnected temporarily. So removing or adding HDD after powered off is recommended.
- Please confirm Normal mode before setting or changing RAID mode. Or you could set PM mode in advance before setting or changing RAID mode.
- Do not change the order of the disks under RAID mode to avoid data loss.
- HDD is precision equipment and RAID is precision system. Please backup your files all the time and operate it carefully to avoid any data mistakes or data loss resulted from improper operations.

• Set RAID through RAID Control Switch

- Turn off the HDD enclosure and HDDs, switch the RAID control switch to "PM" position, press "Set" button and turn on the power switch of the HDD enclosure. PM mode will be set successfully in about 10s. It will buzz when the setting is completed.
- Turn off the HDD enclosure and HDDs again, switch the RAID control switch to your required RAID mode position, press "Set" button and turn on the power switch of HDD enclosure. Required RAID mode will be set in about 10s. It will buzz when the setting is completed.
- HDDs or HDD group that has been set RAID mode will be displayed on computer later and it can be started to use after initiating and partitioned formatting. Please try to restart the HDD enclosure and computer or reset RAID mode if HDDs or HDD group aren't displayed on computer.

Press and hold the "SET" button, then boot the enclosure, and release the SET button after about 10 seconds, that is, the RAID mode is successfully set.
 Note: After the RAID is successfully formed, a new hard disk will be generated. It must be initialized and formatted before it can be used normally.

9528RU3 RAID modes

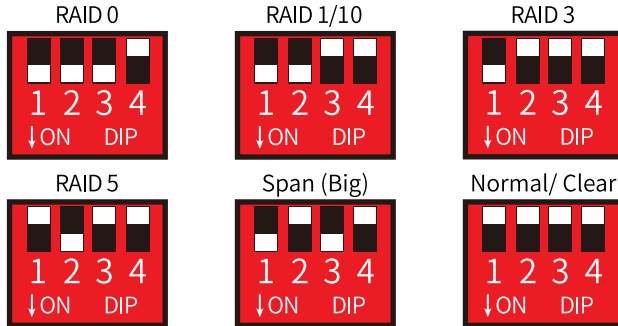


(PS: White button is a function button)

PM(upper—upper)
 RAID 1(lower—upper)

RAID 0(lower—lower)
 SPAN(upper—lower)

9548RU3、9558RU3 RAID modes

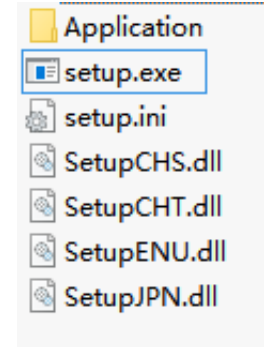


(PS: White button is a function button)

RAID 0(lower-lower-lower-upper) RAID 1/10(lower-lower-upper-upper)
 RAID 3(lower-upper-upper-upper) RAID 5(upper-lower-upper-upper)
 Span(Big)(lower-upper-lower-upper) Normal(upper-upper-upper-upper)

Set through ORICO HW RAID Manager Software

1. Download and install ORICO HW RAID Manager from ORICO official site. Please unzip it before operating if the software is RAR form.

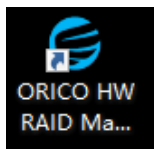


2. Turn off the HDD enclosure, run Setup.exe of installation program and start installing as the following pictures show. You may need to restart your PC after finishing the installation.





3. The shortcut of ORICO HW RAID Manager software will appear on PC desktop after finishing the installation. Please turn on the power of the HDD enclosure and HDD, double click to run the software to set or manage RAID.



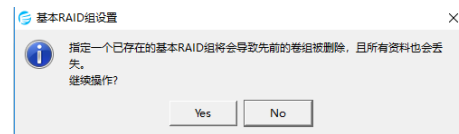
4. Click the icon in the left box at the following picture to open the basic RAID setting interface. Choose the required RAID mode in the RAID mode list and then click "Apply" to set the RAID mode.



Note:

Please confirm the HDD enclosure and HDDs are under Normal mode before setting your required RAID mode. Or you could set Normal mode in advance before setting or changing to the required RAID mode.

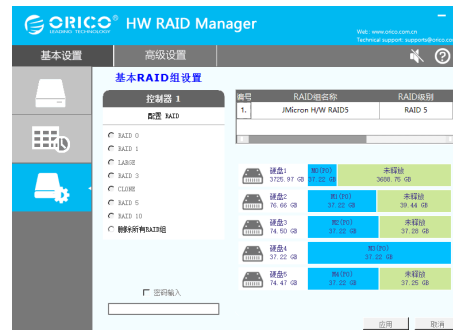
5. Pop up the following interface and click "Yes" to set the chosen RAID, click "No" to cancel the setting.



6. After click "Yes", setting will be started automatically and the progress bar will show you setting progress. Pop up the prompt interface to let you know the setting is finished.



7. HDDs or HDD group that has been set RAID mode will be displayed on computer later and it can be started to use after initiating and partitioned formatting. (Please try to restart the HDD enclosure and computer or reset RAID mode if the formatting of HDDs or HDD group is fail.)



8. Click the advanced options as the following picture shows to open "E-mail Informing Set". We are sorry that it cannot support this function at present. We will inform you as soon as possible when it can be normally used.



Attention

1. The hard drive is precision device, please refer to operation manual in advance and correctly operate it.
2. Please do not disassemble or Repair this product by yourself.
3. Please do not puncture or crush this product and keep it away from high and low temperature, damp and dusty conditions.
4. You will need to initialize the hard drive to work properly if you are using a new hard drive.

Remove the Device

Attention: Do not forcibly remove the hard drive enclosure and disks to avoid data damage or loss.

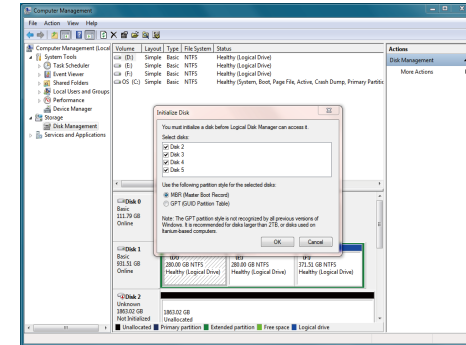
- 1.Remove devices from Windows
To stop using the device, click the "safely remove hardware and media" button in the lower right corner of the taskbar, and then click the device to be removed. When the system prompts "safely remove hardware", that means the device has been successfully removed from the system and it can be unplug from the computer.
- 2.Remove devices from Mac OS
To stop using the device, select the device, and move it to the trash bin.

Hard-drive Format Partition Operation

You need to initialize and format the partition first, otherwise it won't work properly. If it is a brand-new hard drive, please initialize and format the partition according to the following steps:

- 1.Please ensure the ORICO enclosure is installed properly, and connected to the computer.

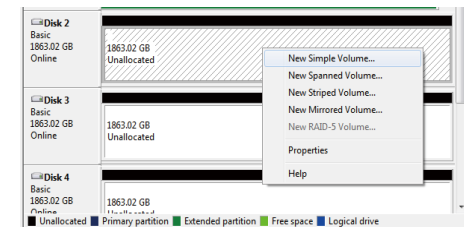
- 2.Right click "My Computer" , then select "Computer Management" , tap or click "Disk Management" on the left side of the window when "Computer Management" opens, then select "MBR" or "GPT" partition form and click "OK"



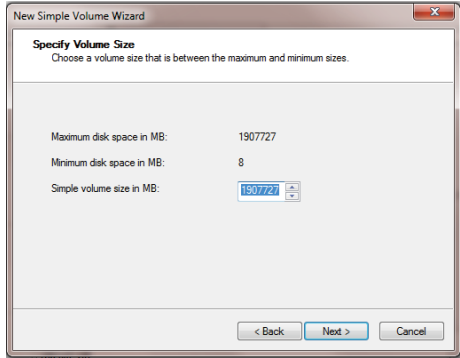
Note:

- If the disk capacity is less than 2TB, please use MBR partition form to initialize the hard disk.
- If the disk capacity is greater than 2TB, the disk must be initialized by using of GPT partition form, otherwise only 2TB capacity will be available and the excess capacity will not able to use.

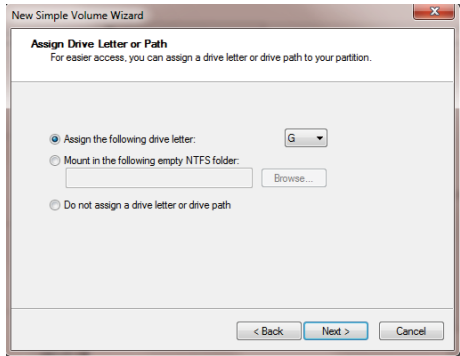
- (3) Right click the "unallocated" disk space, select "new simple volume" to start formatting the hard drive partition



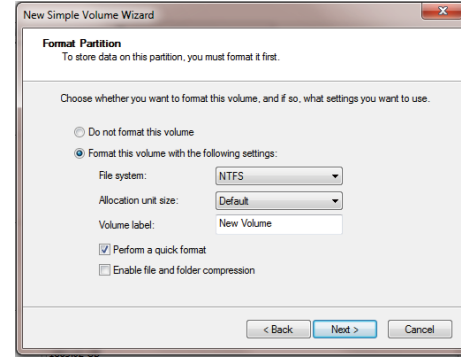
- (4) When setting the capacity of disk partition, can customize the partition capacity, or set the default maximum simple volume size, and there will be only one disk partition.



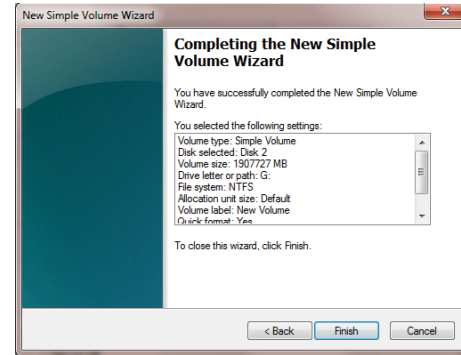
- (5) Allocating the drive letter and path, (e.g. Explorer, C, D, E, F, G drive) drive letter.



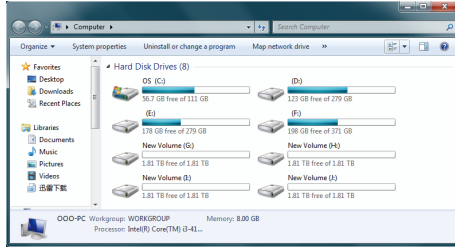
- (6) Format partition, able to set file system format (NTFS, FAT32 or exFAT), assign unit size (default set), volume label name, recommend "perform quick format", and click "next" when configuration is completed



- (7) Click "finish" to perform the final step of formatting partition.



- (8) It will take 5-30 seconds, and the new partition drive letter will be displayed in the explorer after formatting.



Failure Solutions

If the product cannot be recognized in the computer, please try to solve the issue according to the following methods:

- Under XP system, due to the system limit of XP itself, the hard drive with capacity of more than 2TB cannot be normally used. You can update the system to WIN7.
- If the hard drive cannot be displayed in the WIN7 system, you can check whether the hard drive is new or not. The new hard drive needs to be initialized in the computer management before use.

Notice

1. Please do not hit, throw, or puncture the product, and avoid dropping, squeezing, or bending.
2. Please do not use or store this product in a humid environment and avoid being wetted or rinsed with liquids.
3. Please do not use the product in a hot, high-dust environment and keep it away from fire.
4. Please do not expose this product to the sun.
5. Please do not place this product in a corrosive environment. Do not use other chemical solutions to clean the product.

6. Please keep the product and accessories away from children. Do not allow children to use the product without supervision.
7. Please do not disassemble and repair the product or accessories without the authorization of ORICO.
8. If you have any questions during the use of this product, please feel free to contact your dealer or ORICO Customer Service Center.

Declaration

ORICO Technologies Co., Ltd., all rights reserved.

Thank you so much for purchase ORICO product. Please refer to this manual when using orico product or experienced issues. Additionally, please kindly contact ORICO customer care team if any concern. ORICO® is registered trademark of ORICO TechnologiesCo., Ltd.. Any other product, trademark, service or company mentioned herein is trademark or registered trademark of the respective owners.

This manual is for reference only and it's not a guarantee.

ORICO Technologies Co., Ltd. reserve all rights of maintenance to this manual and shall not liable for any lost or damage resulting from this manual. Please kindly contact orico customer care team when any concern.

ORICO Technologies Co., Ltd shall not liable for compensation and maintenance of the following conditions.

1. Any special, incidental, indirect and secondary lost or damage.
2. Profit and revenue lost or damage.
3. Files, data, drive and device lost or damage.

Note: Compensation for lost or damage resulting from This manual or orico product shall not exceed the payment of your purchase to this product.

FCC

This device complies with part 15 of the FCC Rules.

Operation is subject to the following two conditions:(1)This device may not cause harmful interference, and (2) this device must accept any interference received, including interference that may cause undesired operation.

